

## User Impact Assessment

This section details what the impacts of the revised MPA proposals will be on human-use activities when combined with current legislation. It details the area and percent cover in the nearshore (0-2000 m) and in the demersal fishing range (0-55 m) where specific activities would be:

- Permitted
- Restricted (permitted under certain conditions)
- Prohibited

This has been done for:

- Currently legislated areas only
- The revised MPA proposals combined with currently legislated areas

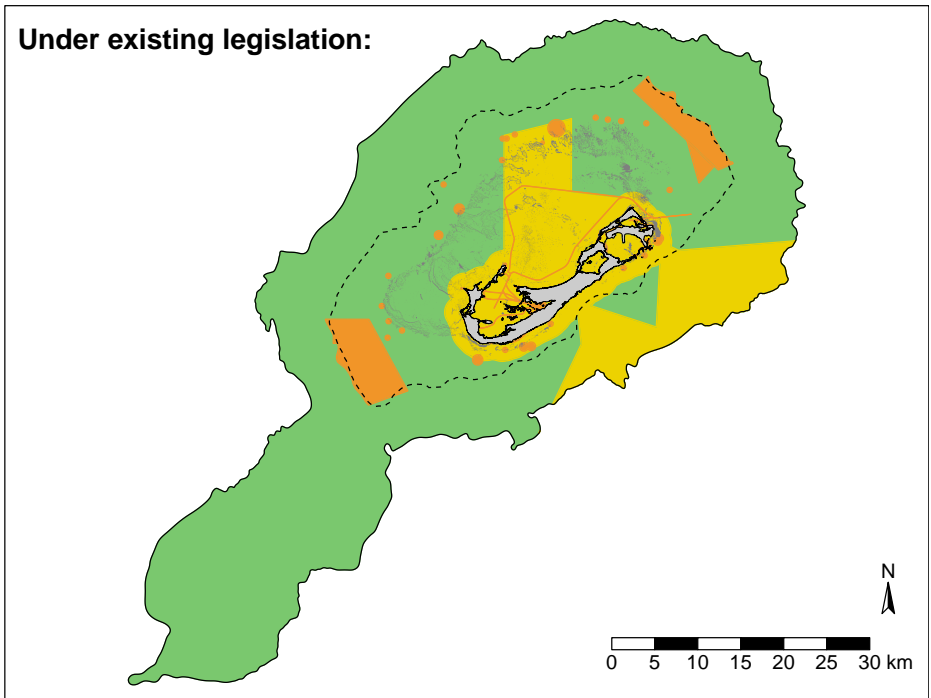
To view the User Impact Assessment for the original MPA proposals, please see Section 5.5 of the [First Draft MSP](#).

# Aquaculture - small scale

Where can these activities take place?

- Permitted
- Restricted (permitted under certain conditions)
- Prohibited

- Land
- 55m (30 fathom) contour
- Reef
- 2000m (1094 fathom) contour



**How much area permits (or allows) these activities?**

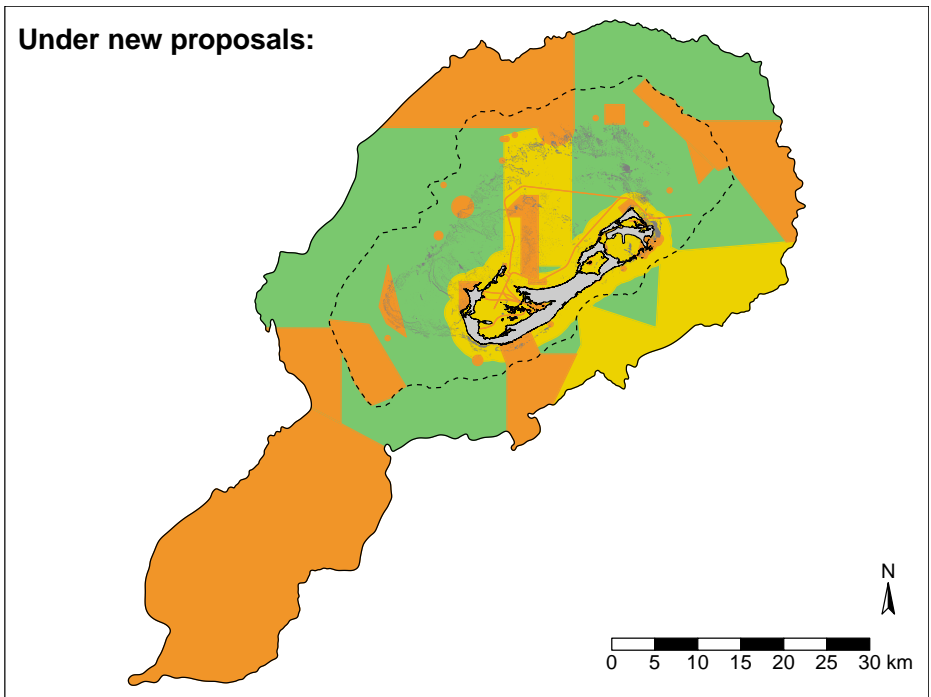
0-55m: 55.8% (527.7 sq km)  
 0-2000m: 76.2% (1966.5 sq km)

**How much area prohibits these activities?**

0-55m: 10.7% (101.0 sq km)  
 0-2000m: 4.2% (107.3 sq km)

**How much area has restrictions on these activities (i.e., can take place under certain conditions)?**

0-55m: 33.6% (317.8 sq km)  
 0-2000m: 19.6% (506.4 sq km)



**How much area permits (or allows) these activities?**

0-55m: 52.8% (499.4 sq km)  
 0-2000m: 42.5% (1095.9 sq km)

**How much area prohibits these activities?**

0-55m: 20.0% (189.4 sq km)  
 0-2000m: 40.2% (1038.1 sq km)

**How much area has restrictions on these activities (i.e., can take place under certain conditions)?**

0-55m: 27.2% (257.7 sq km)  
 0-2000m: 17.3% (446.3 sq km)

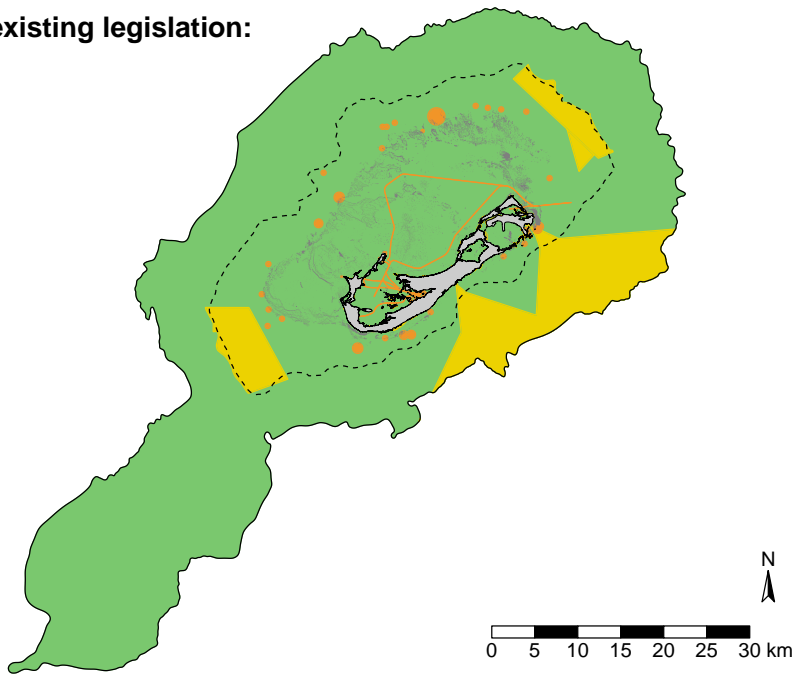
# Bottom fishing; Deep trolling; Vertical lining

Where can these activities take place?

- Permitted
- Restricted (permitted under certain conditions)
- Prohibited

- Land
- Reef
- 55m (30 fathom) contour
- 2000m (1094 fathom) contour

## Under existing legislation:



### How much area permits (or allows) these activities?

0-55m: 88.9% (841.5 sq km)  
 0-2000m: 88.5% (2282.3 sq km)

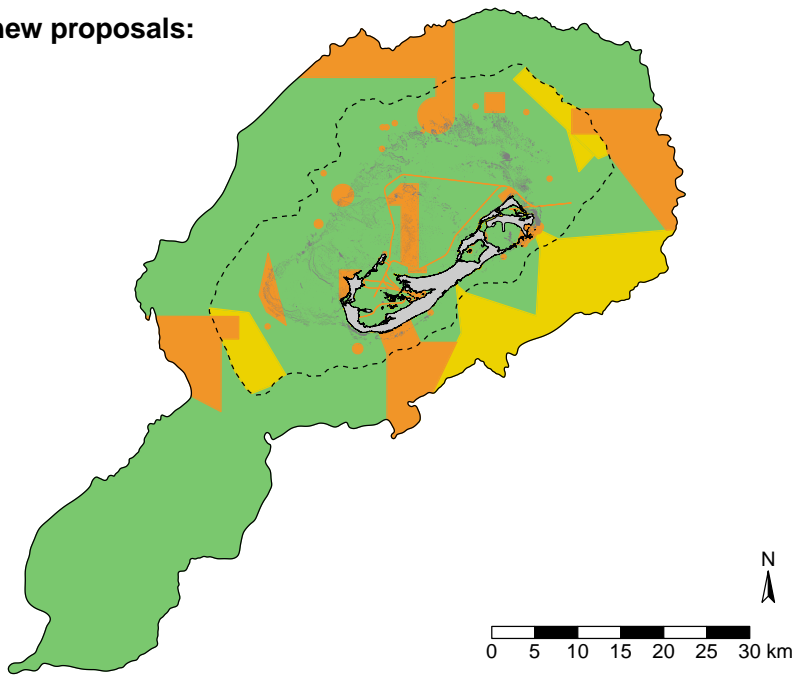
### How much area prohibits these activities?

0-55m: 1.7% (15.7 sq km)  
 0-2000m: 0.6% (15.7 sq km)

### How much area has restrictions on these activities (i.e., can take place under certain conditions)?

0-55m: 9.4% (89.3 sq km)  
 0-2000m: 10.9% (282.3 sq km)

## Under new proposals:



### How much area permits (or allows) these activities?

0-55m: 81.4% (770.0 sq km)  
 0-2000m: 75.7% (1953.9 sq km)

### How much area prohibits these activities?

0-55m: 10.9% (103.6 sq km)  
 0-2000m: 14.2% (367.0 sq km)

### How much area has restrictions on these activities (i.e., can take place under certain conditions)?

0-55m: 7.7% (72.8 sq km)  
 0-2000m: 10.1% (259.4 sq km)

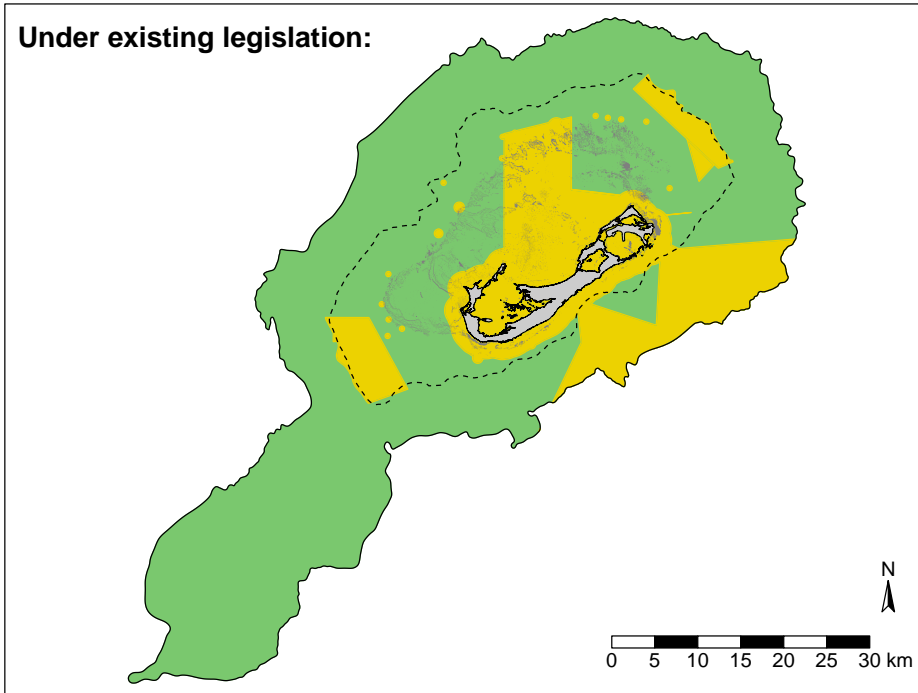
# Cabeling

Where can these activities take place?

- Permitted
- Restricted (permitted under certain conditions)
- Prohibited

- Land
- 55m (30 fathom) contour
- Reef
- 2000m (1094 fathom) contour

## Under existing legislation:



### How much area permits (or allows) these activities?

0-55m: 55.8% (527.7 sq km)  
 0-2000m: 76.2% (1966.5 sq km)

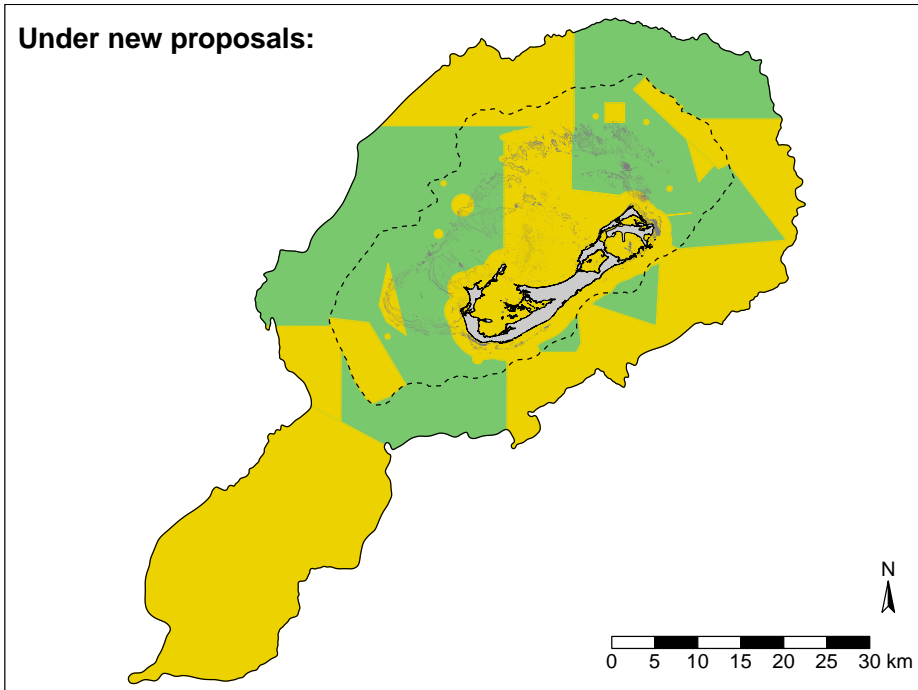
### How much area prohibits these activities?

0-55m: 0% (0 sq km)  
 0-2000m: 0% (0 sq km)

### How much area has restrictions on these activities (i.e., can take place under certain conditions)?

0-55m: 44.2% (418.7 sq km)  
 0-2000m: 23.8% (613.8 sq km)

## Under new proposals:



### How much area permits (or allows) these activities?

0-55m: 50.9% (482.1 sq km)  
 0-2000m: 41.8% (1078.6 sq km)

### How much area prohibits these activities?

0-55m: 0% (0 sq km)  
 0-2000m: 0% (0 sq km)

### How much area has restrictions on these activities (i.e., can take place under certain conditions)?

0-55m: 49.1% (464.4 sq km)  
 0-2000m: 58.2% (1501.7 sq km)

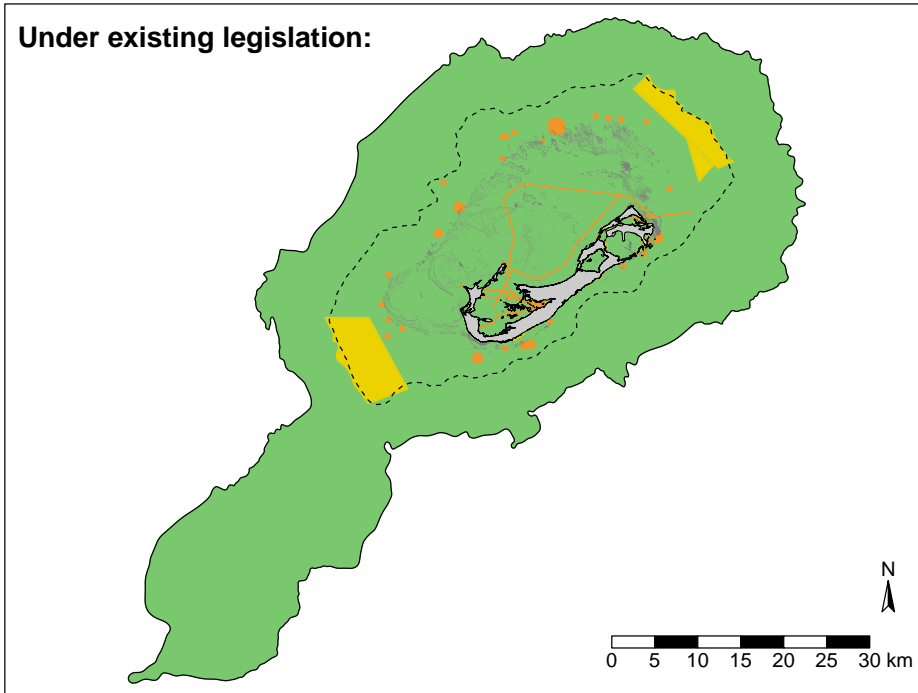
# Catch & release fly fishing

Where can these activities take place?

- Permitted
- Restricted (permitted under certain conditions)
- Prohibited

- Land
- 55m (30 fathom) contour
- Reef
- 2000m (1094 fathom) contour

## Under existing legislation:



### How much area permits (or allows) these activities?

0-55m: 89.3% (845.5 sq km)  
 0-2000m: 95.8% (2473.0 sq km)

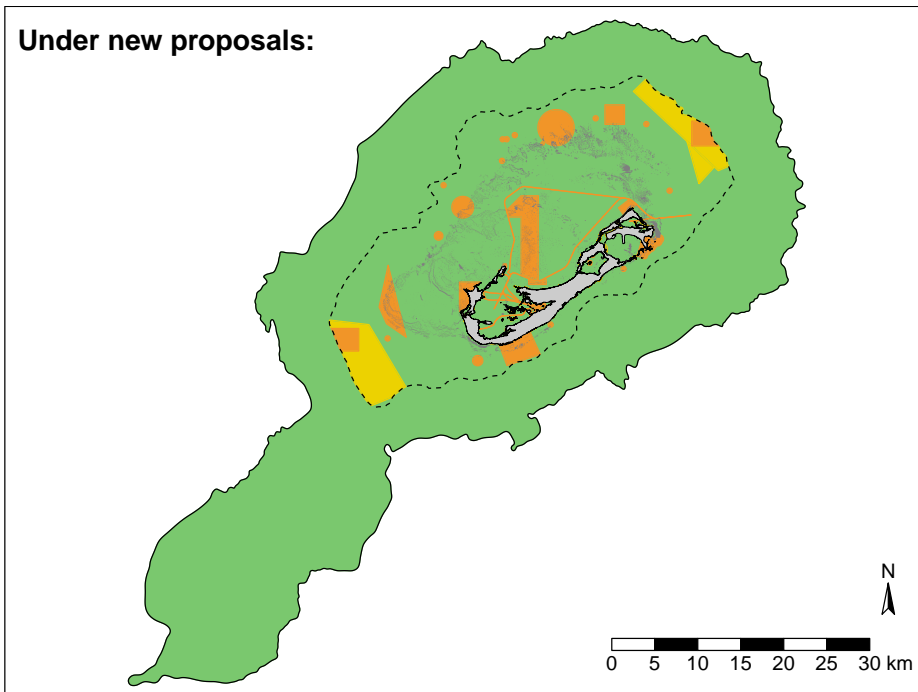
### How much area prohibits these activities?

0-55m: 1.7% (15.7 sq km)  
 0-2000m: 0.6% (15.7 sq km)

### How much area has restrictions on these activities (i.e., can take place under certain conditions)?

0-55m: 9.0% (85.3 sq km)  
 0-2000m: 3.6% (91.7 sq km)

## Under new proposals:



### How much area permits (or allows) these activities?

0-55m: 82.3% (779.2 sq km)  
 0-2000m: 93.5% (2413.0 sq km)

### How much area prohibits these activities?

0-55m: 10.3% (97.8 sq km)  
 0-2000m: 3.8% (97.8 sq km)

### How much area has restrictions on these activities (i.e., can take place under certain conditions)?

0-55m: 7.3% (69.4 sq km)  
 0-2000m: 2.7% (69.4 sq km)

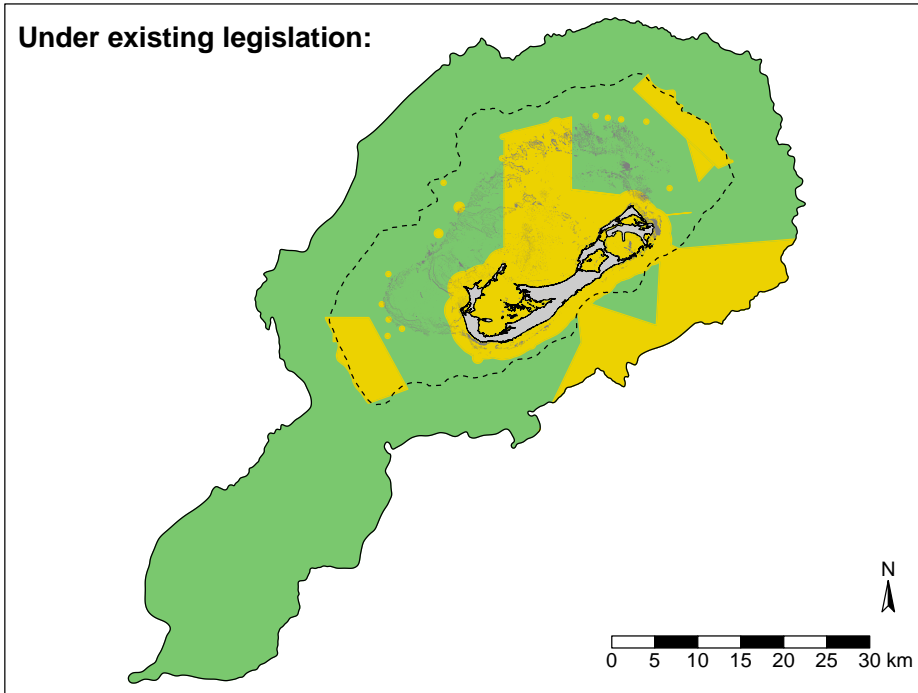
# Dredging & dumping

Where can these activities take place?

- Permitted
- Restricted (permitted under certain conditions)
- Prohibited

- Land
- Reef
- 55m (30 fathom) contour
- 2000m (1094 fathom) contour

## Under existing legislation:



### How much area permits (or allows) these activities?

0-55m: 55.8% (527.7 sq km)  
 0-2000m: 76.2% (1966.5 sq km)

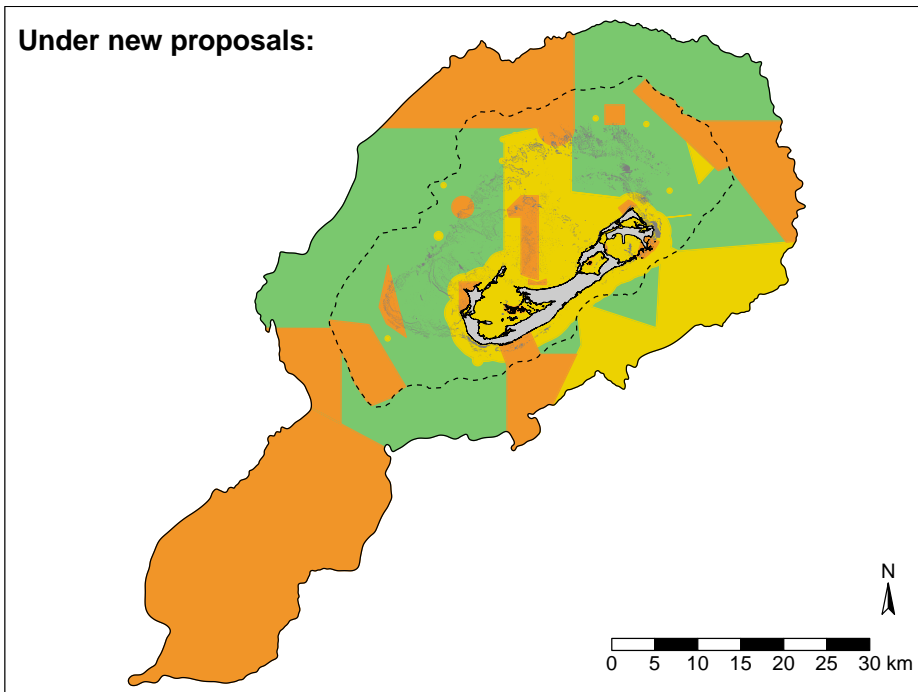
### How much area prohibits these activities?

0-55m: 0.0% (0.0 sq km)  
 0-2000m: 0.0% (0.0 sq km)

### How much area has restrictions on these activities (i.e., can take place under certain conditions)?

0-55m: 44.2% (418.7 sq km)  
 0-2000m: 23.8% (613.8 sq km)

## Under new proposals:



### How much area permits (or allows) these activities?

0-55m: 50.9% (482.1 sq km)  
 0-2000m: 41.8% (1078.6 sq km)

### How much area prohibits these activities?

0-55m: 18.7% (177.4 sq km)  
 0-2000m: 39.8% (1026.1 sq km)

### How much area has restrictions on these activities (i.e., can take place under certain conditions)?

0-55m: 30.3% (287.0 sq km)  
 0-2000m: 18.4% (475.6 sq km)

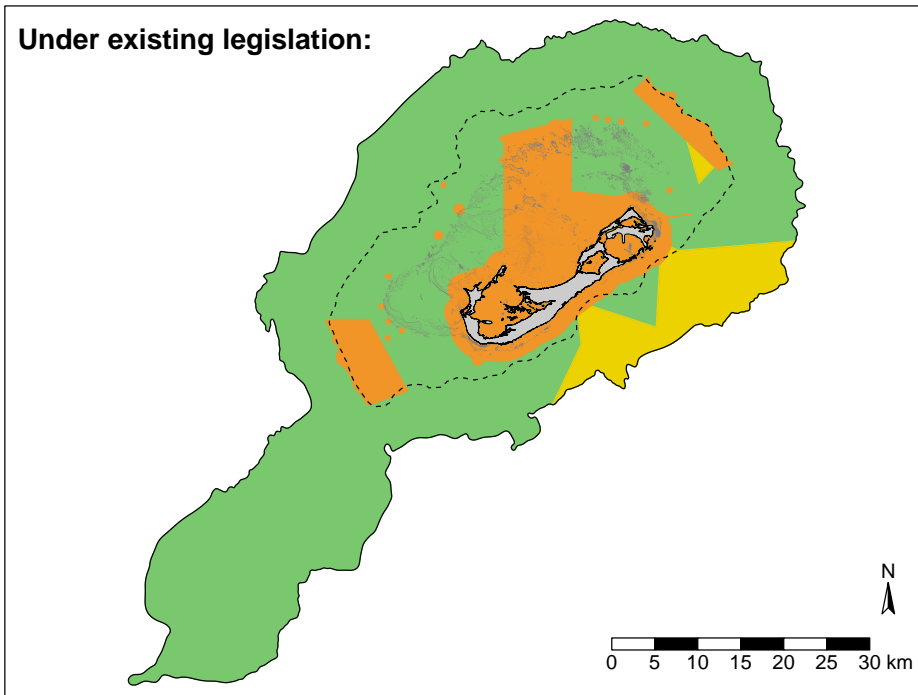
# Industrial-scale fishing; Industrial-scale aquaculture

Where can these activities take place?

- Permitted
- Restricted (permitted under certain conditions)
- Prohibited

- Land
- Reef
- 55m (30 fathom) contour
- 2000m (1094 fathom) contour

## Under existing legislation:



### How much area permits (or allows) these activities?

0-55m: 55.8% (527.7 sq km)  
 0-2000m: 76.2% (1966.5 sq km)

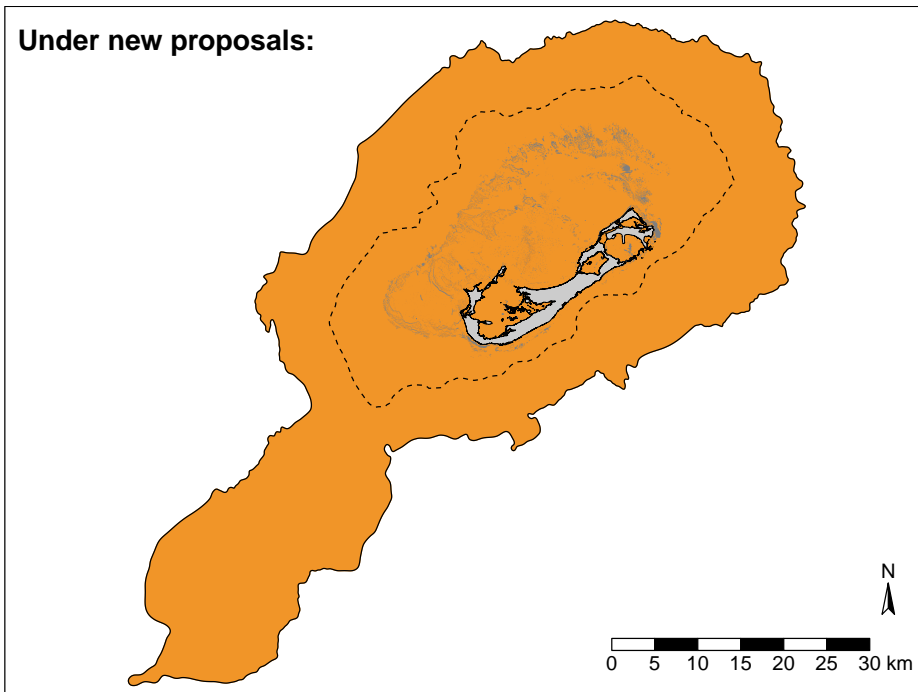
### How much area prohibits these activities?

0-55m: 43.6% (412.5 sq km)  
 0-2000m: 16.3% (421.8 sq km)

### How much area has restrictions on these activities (i.e., can take place under certain conditions)?

0-55m: 0.7% (6.3 sq km)  
 0-2000m: 7.4% (192.0 sq km)

## Under new proposals:



### How much area permits (or allows) these activities?

0-55m: 0.0% (0.0 sq km)  
 0-2000m: 0.0% (0.0 sq km)

### How much area prohibits these activities?

0-55m: 100.0% (946.5 sq km)  
 0-2000m: 100.0% (2580.3 sq km)

### How much area has restrictions on these activities (i.e., can take place under certain conditions)?

0-55m: 0.0% (0.0 sq km)  
 0-2000m: 0.0% (0.0 sq km)

# Infrastructure works & development

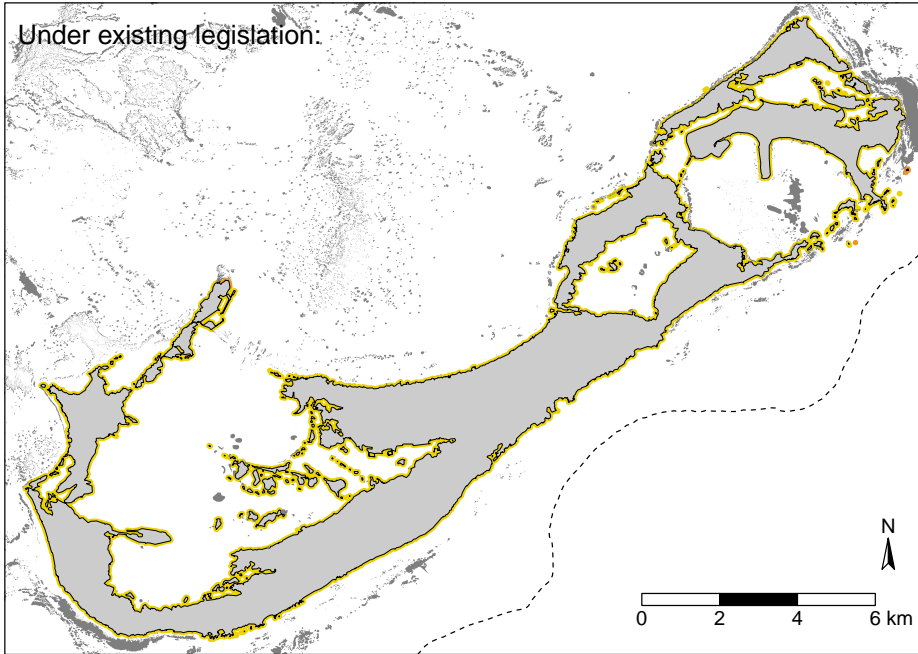
Showing only nearshore area.

Where can these activities take place?

- Permitted
- Restricted (permitted under certain conditions)
- Prohibited

- Land
- Reef

--- 55m (30 fathom) contour



**How much of the shoreline permits (or allows) these activities?**

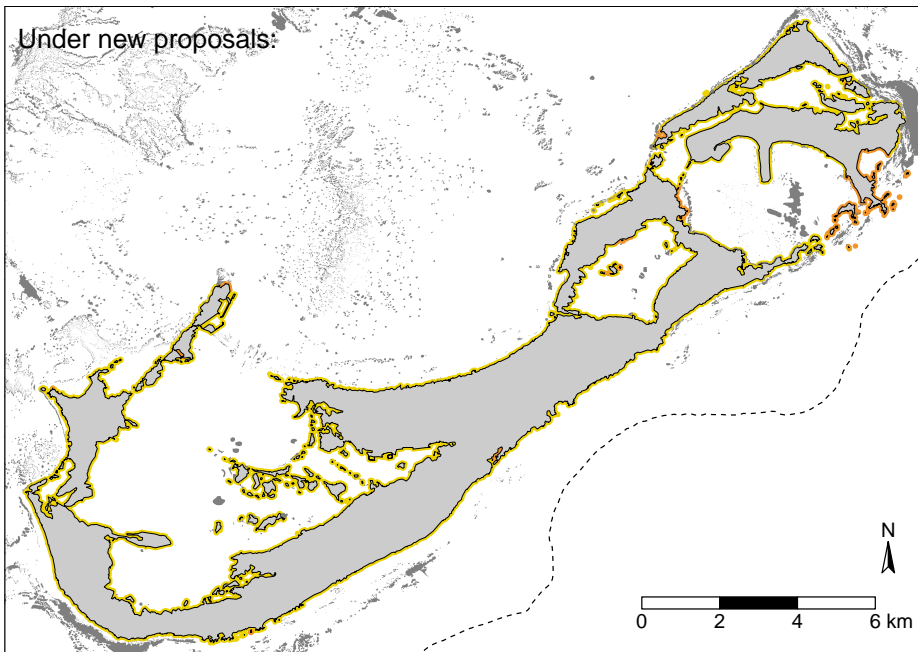
0% (0 km)

**How much of the shoreline prohibits these activities?**

0.2% (0.7 km)

**How much of the shoreline has restrictions on these activities (i.e., can take place under certain conditions)?**

99.8% (340.3 km)



**How much of the shoreline permits (or allows) these activities?**

0% (0 km)

**How much of the shoreline prohibits these activities?**

7.0% (24.0 km)

**How much of the shoreline has restrictions on these activities (i.e., can take place under certain conditions)?**

93.0% (317.2 km)



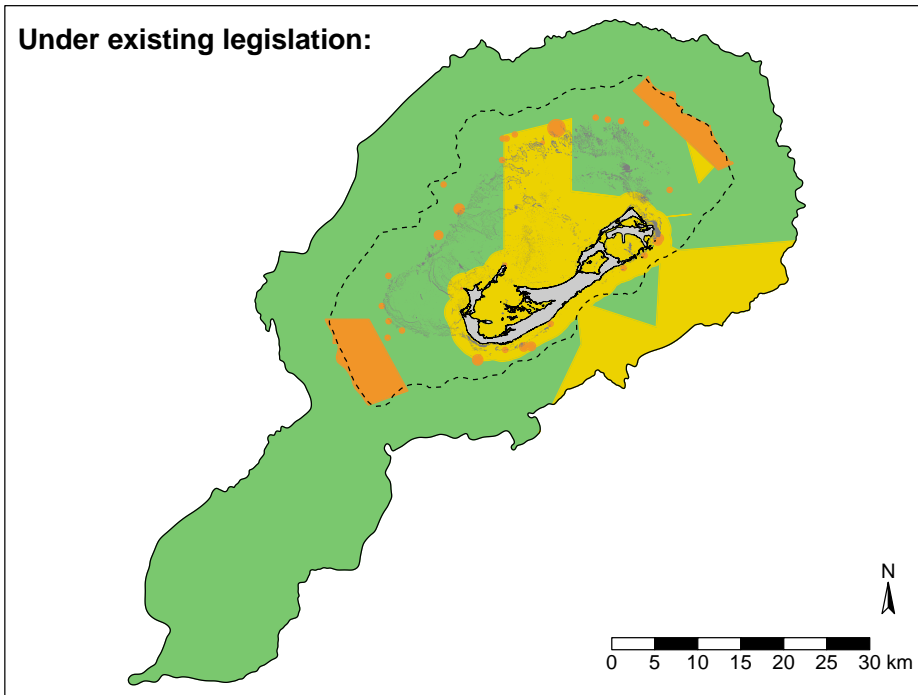
# Infrastructure works & development

Where can these activities take place?

- Permitted
- Restricted (permitted under certain conditions)
- Prohibited

- Land
- Reef
- 55m (30 fathom) contour
- 2000m (1094 fathom) contour

## Under existing legislation:



### How much area permits (or allows) these activities?

0-55m: 55.8% (527.7 sq km)  
 0-2000m: 76.2% (1966.5 sq km)

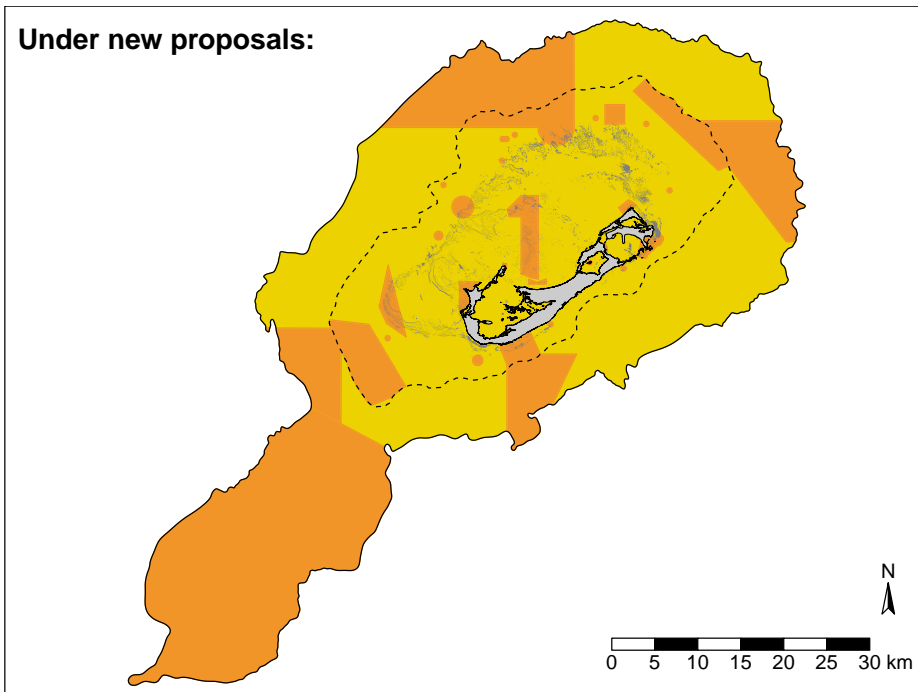
### How much area prohibits these activities?

0-55m: 9.8% (92.7 sq km)  
 0-2000m: 3.8% (99.1 sq km)

### How much area has restrictions on these activities (i.e., can take place under certain conditions)?

0-55m: 34.5% (326.1 sq km)  
 0-2000m: 19.9% (514.7 sq km)

## Under new proposals:



### How much area permits (or allows) these activities?

0-55m: 0.0% (0.0 sq km)  
 0-2000m: 0.0% (0.0 sq km)

### How much area prohibits these activities?

0-55m: 19.2% (181.9 sq km)  
 0-2000m: 39.9% (1030.6 sq km)

### How much area has restrictions on these activities (i.e., can take place under certain conditions)?

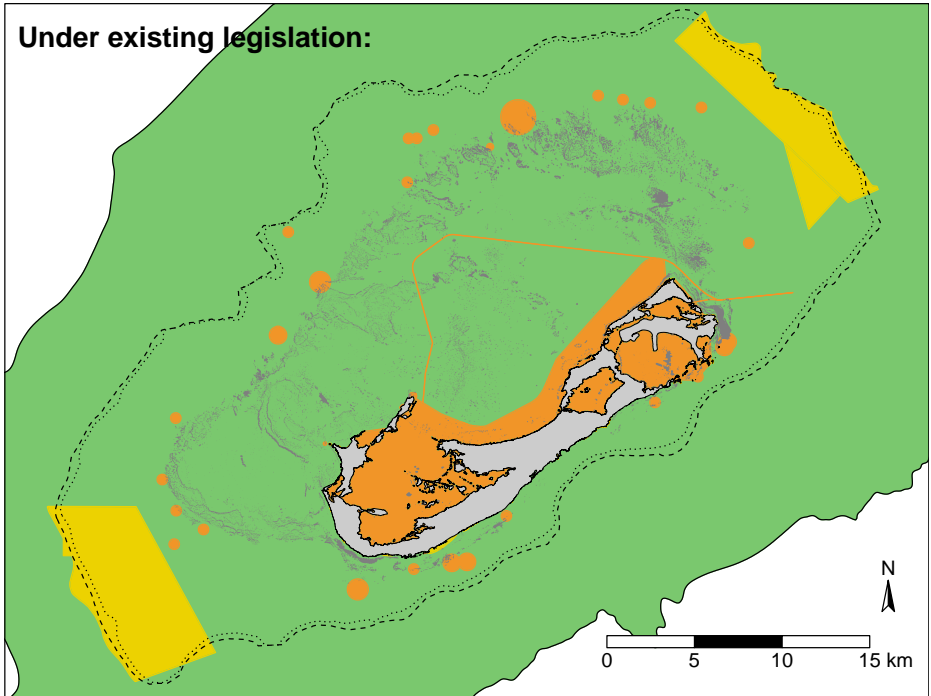
0-55m: 80.8% (764.6 sq km)  
 0-2000m: 60.1% (1549.7 sq km)

# Lobster diving

Where can these activities take place?

- Permitted
- Restricted (permitted under certain conditions)
- Prohibited

- Land
- Reef
- ..... 30m contour (16 fathom) contour
- 55m (30 fathom) contour
- 2000m (1094 fathom) contour



**How much area permits (or allows) these activities?**

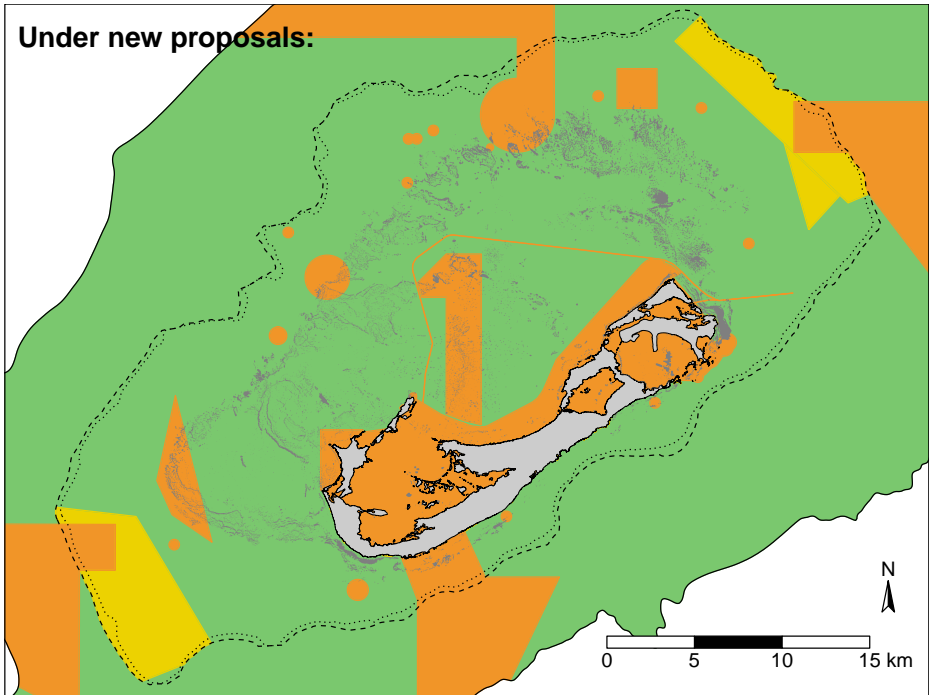
0-55m: 80.9% (765.6 sq km)  
 0-2000m: 92.7% (2393.1 sq km)

**How much area prohibits these activities?**

0-55m: 10.2% (96.4 sq km)  
 0-2000m: 3.7% (96.4 sq km)

**How much area has restrictions on these activities (i.e., can take place under certain conditions)?**

0-55m: 8.9% (84.5 sq km)  
 0-2000m: 3.5% (90.9 sq km)



**How much area permits (or allows) these activities?**

0-55m: 73.7% (697.6 sq km)  
 0-2000m: 80.1% (2068.0 sq km)

**How much area prohibits these activities?**

0-55m: 19.0% (180.1 sq km)  
 0-2000m: 17.2% (443.5 sq km)

**How much area has restrictions on these activities (i.e., can take place under certain conditions)?**

0-55m: 7.3% (68.8 sq km)  
 0-2000m: 2.7% (68.8 sq km)

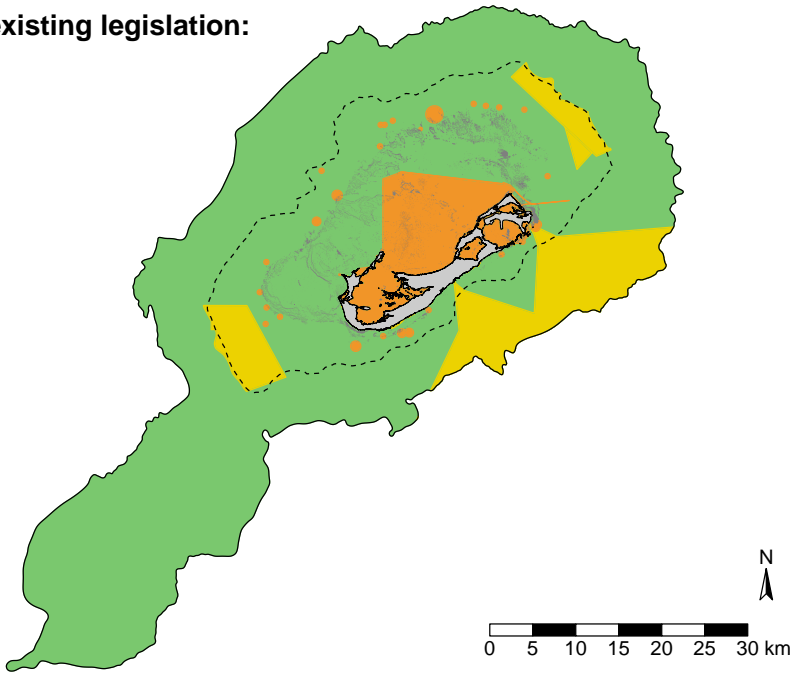
# Lobster trapping

Where can these activities take place?

- Permitted
- Restricted (permitted under certain conditions)
- Prohibited

- Land
- 55m (30 fathom) contour
- Reef
- 2000m (1094 fathom) contour

## Under existing legislation:



### How much area permits (or allows) these activities?

0-55m: 70.3% (665.8 sq km)  
 0-2000m: 81.6% (2106.6 sq km)

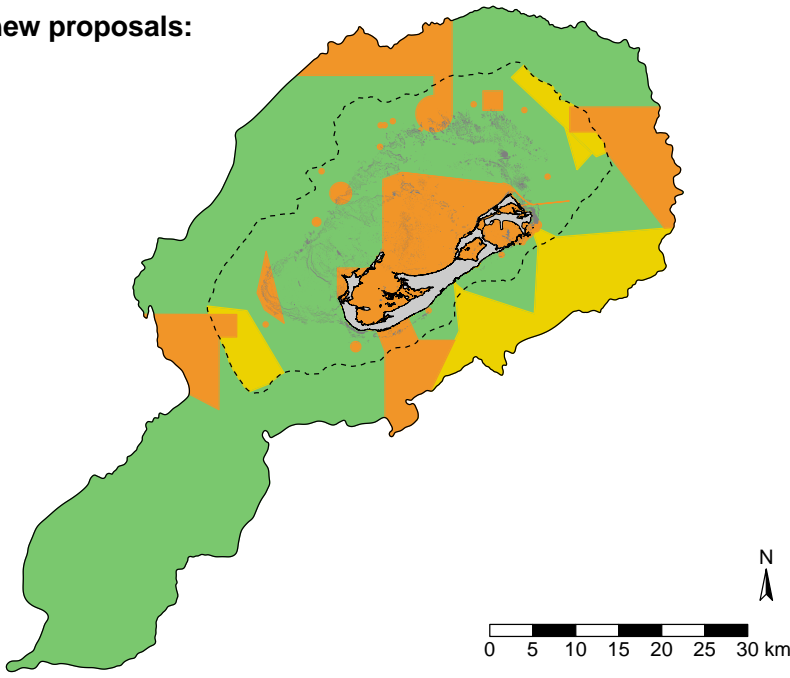
### How much area prohibits these activities?

0-55m: 20.3% (192.3 sq km)  
 0-2000m: 7.5% (192.3 sq km)

### How much area has restrictions on these activities (i.e., can take place under certain conditions)?

0-55m: 9.3% (88.3 sq km)  
 0-2000m: 10.9% (281.4 sq km)

## Under new proposals:



### How much area permits (or allows) these activities?

0-55m: 65.5% (620.0 sq km)  
 0-2000m: 69.9% (1803.9 sq km)

### How much area prohibits these activities?

0-55m: 26.8% (254.0 sq km)  
 0-2000m: 20.1% (517.4 sq km)

### How much area has restrictions on these activities (i.e., can take place under certain conditions)?

0-55m: 7.7% (72.4 sq km)  
 0-2000m: 10.0% (259.0 sq km)

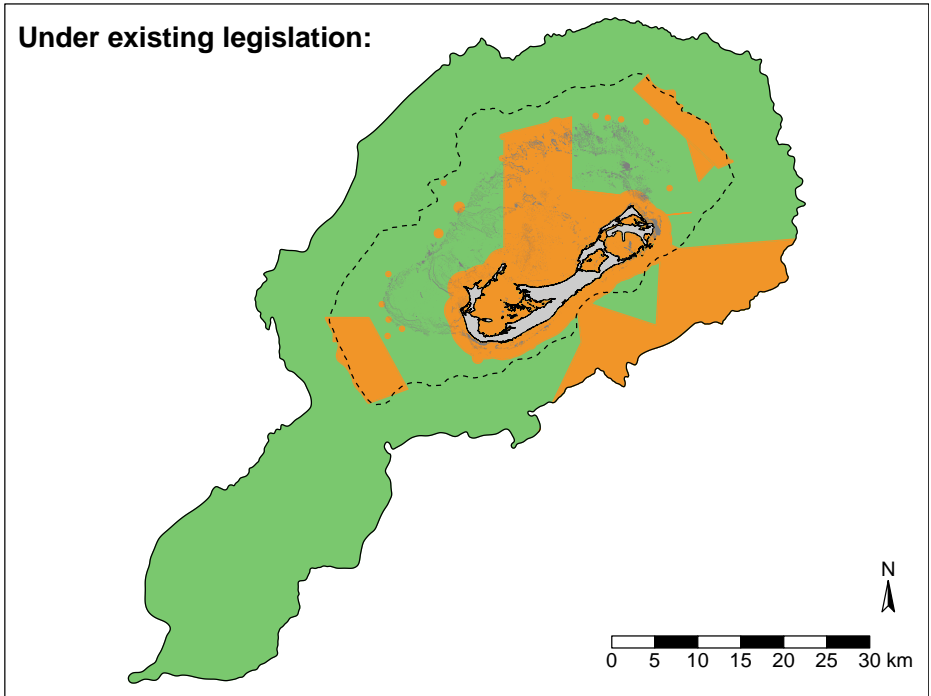
# Mining, oil & gas extraction

Where can these activities take place?

- Permitted
- Restricted (permitted under certain conditions)
- Prohibited

- Land
- Reef
- 55m (30 fathom) contour
- 2000m (1094 fathom) contour

## Under existing legislation:



### How much area permits (or allows) these activities?

0-55m: 55.8% (527.7 sq km)  
 0-2000m: 76.2% (1966.5 sq km)

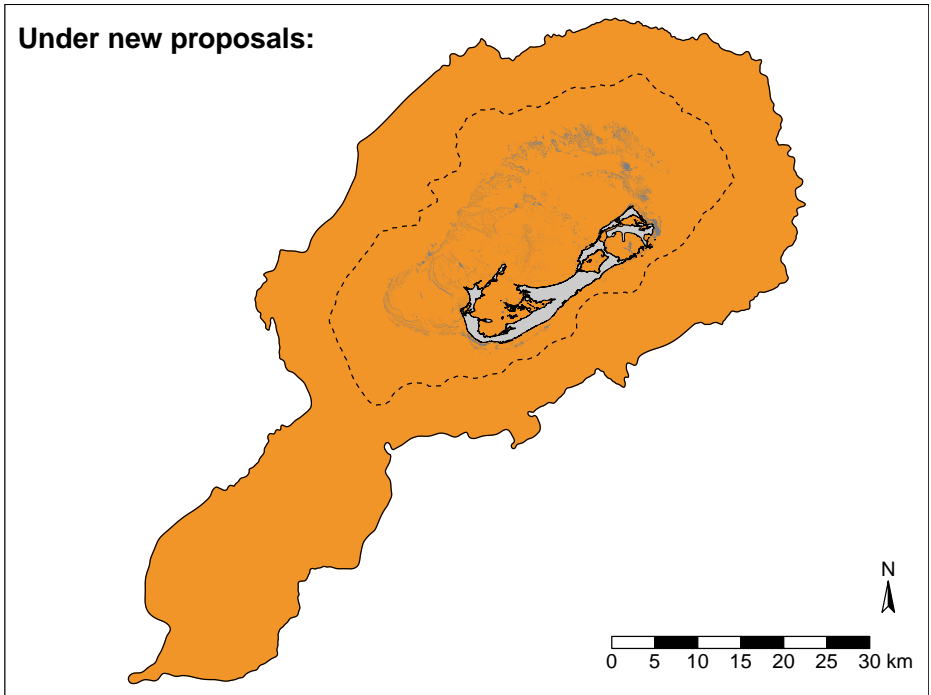
### How much area prohibits these activities?

0-55m: 44.2% (418.7 sq km)  
 0-2000m: 23.8% (613.8 sq km)

### How much area has restrictions on these activities (i.e., can take place under certain conditions)?

0-55m: 0% (0 sq km)  
 0-2000m: 0% (0 sq km)

## Under new proposals:



### How much area permits (or allows) these activities?

0-55m: 0.0% (0.0 sq km)  
 0-2000m: 0.0% (0.0 sq km)

### How much area prohibits these activities?

0-55m: 100.0% (946.5 sq km)  
 0-2000m: 100.0% (2580.3 sq km)

### How much area has restrictions on these activities (i.e., can take place under certain conditions)?

0-55m: 0% (0 sq km)  
 0-2000m: 0% (0 sq km)

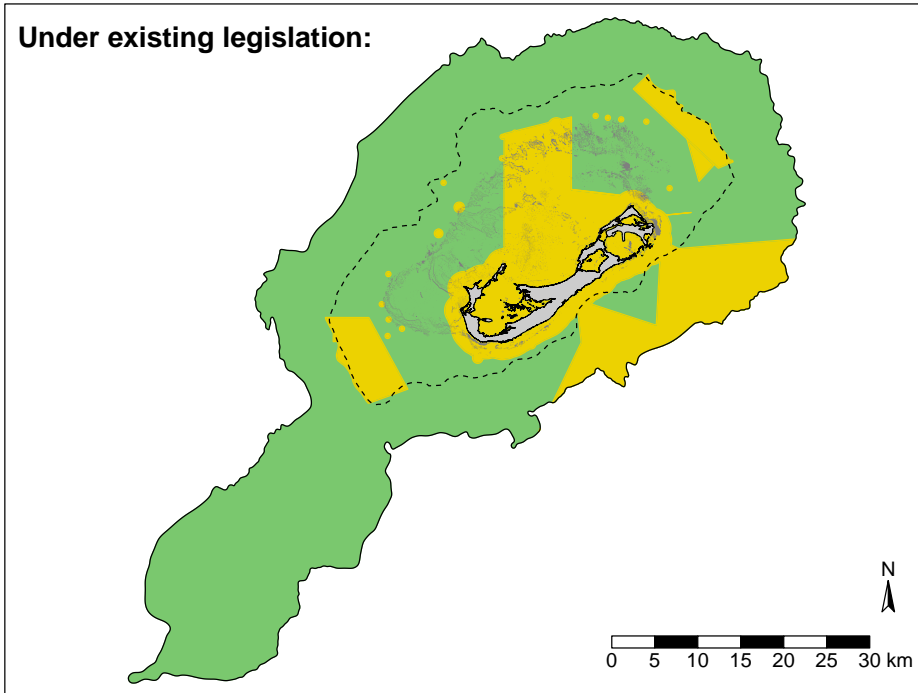
# Mooring works

Where can these activities take place?

- Permitted
- Restricted (permitted under certain conditions)
- Prohibited

- Land
- 55m (30 fathom) contour
- Reef
- 2000m (1094 fathom) contour

## Under existing legislation:



### How much area permits (or allows) these activities?

0-55m: 55.8% (527.7 sq km)  
 0-2000m: 76.2% (1966.5 sq km)

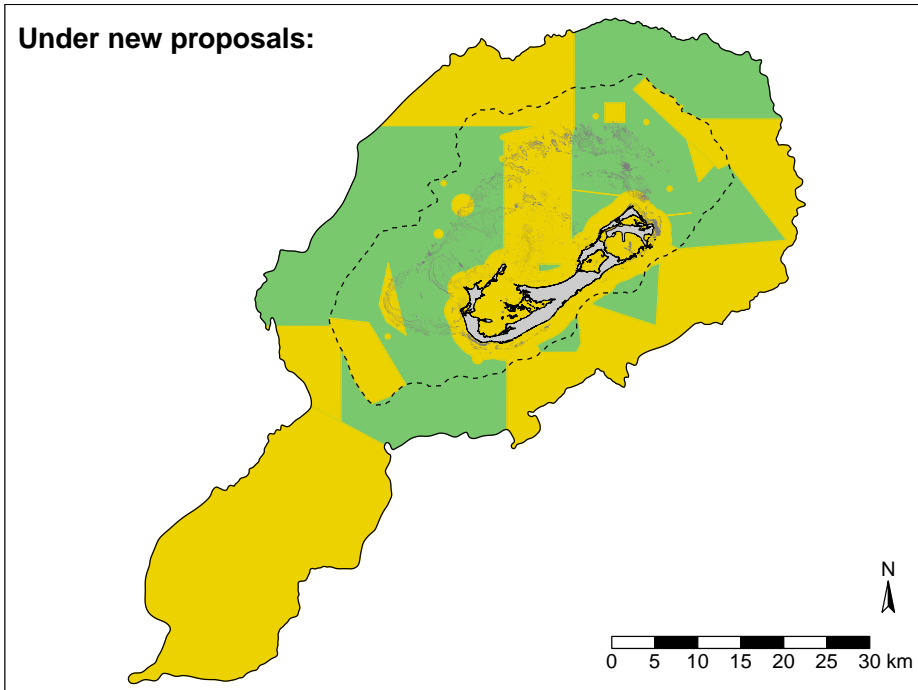
### How much area prohibits these activities?

0-55m: 0% (0 sq km)  
 0-2000m: 0% (0 sq km)

### How much area has restrictions on these activities (i.e., can take place under certain conditions)?

0-55m: 44.2% (418.7 sq km)  
 0-2000m: 23.8% (613.8 sq km)

## Under new proposals:



### How much area permits (or allows) these activities?

0-55m: 52.8% (499.4 sq km)  
 0-2000m: 42.5% (1095.9 sq km)

### How much area prohibits these activities?

0-55m: 0% (0 sq km)  
 0-2000m: 0% (0 sq km)

### How much area has restrictions on these activities (i.e., can take place under certain conditions)?

0-55m: 47.2% (447.1 sq km)  
 0-2000m: 57.5% (1484.4 sq km)

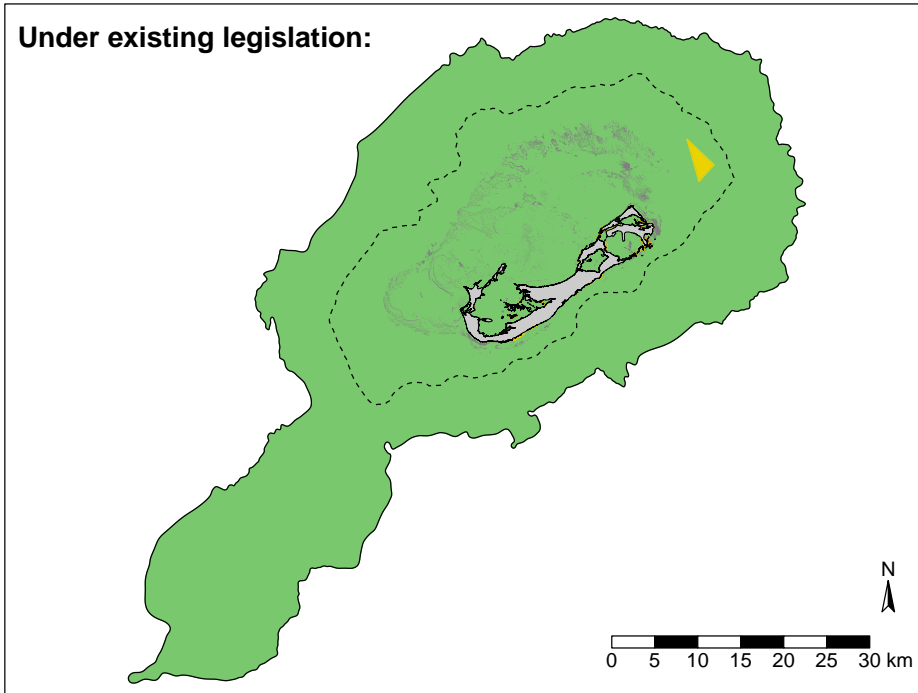
# Navigation; Transitting vessels; Boating; Anchoring

Where can these activites take place?

- Permitted
- Restricted (permitted under certain conditions)
- Prohibited

- Land
- 55m (30 fathom) contour
- Reef
- 2000m (1094 fathom) contour

## Under existing legislation:



### How much area permits (or allows) these activities?

0-55m: 99.2% (939.1 sq km)  
 0-2000m: 99.7% (2572.9 sq km)

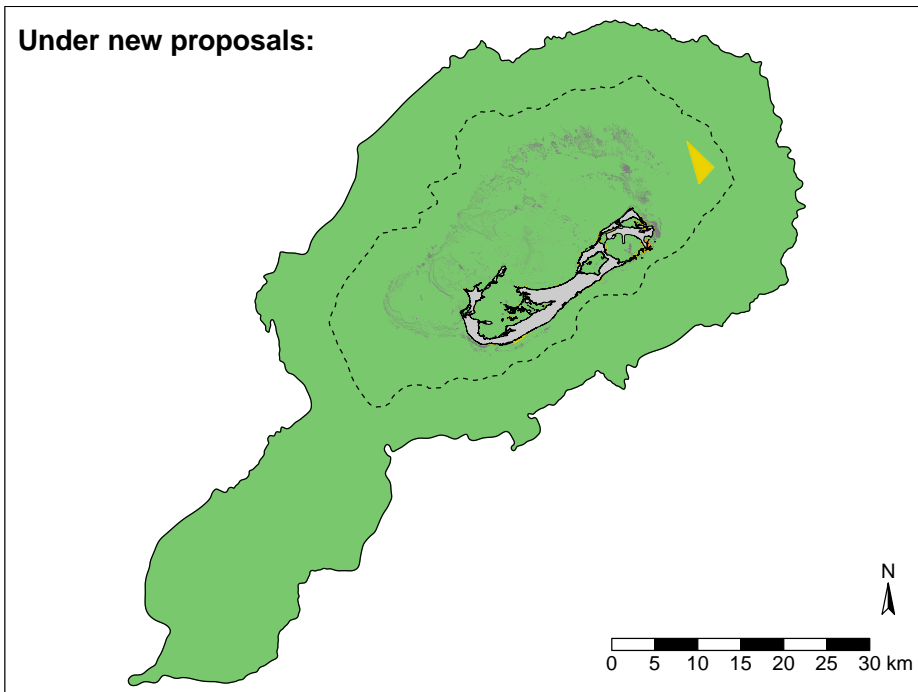
### How much area prohibits these activities?

0-55m: 0.0% (0.4 sq km)  
 0-2000m: 0.0% (0.4 sq km)

### How much area has restrictions on these activities (i.e., can take place under certain conditions)?

0-55m: 0.7% (7.0 sq km)  
 0-2000m: 0.3% (7.0 sq km)

## Under new proposals:



### How much area permits (or allows) these activities?

0-55m: 99.2% (939.1 sq km)  
 0-2000m: 99.7% (2572.9 sq km)

### How much area prohibits these activities?

0-55m: 0.0% (0.4 sq km)  
 0-2000m: 0.0% (0.4 sq km)

### How much area has restrictions on these activities (i.e., can take place under certain conditions)?

0-55m: 0.7% (7.0 sq km)  
 0-2000m: 0.3% (7.0 sq km)

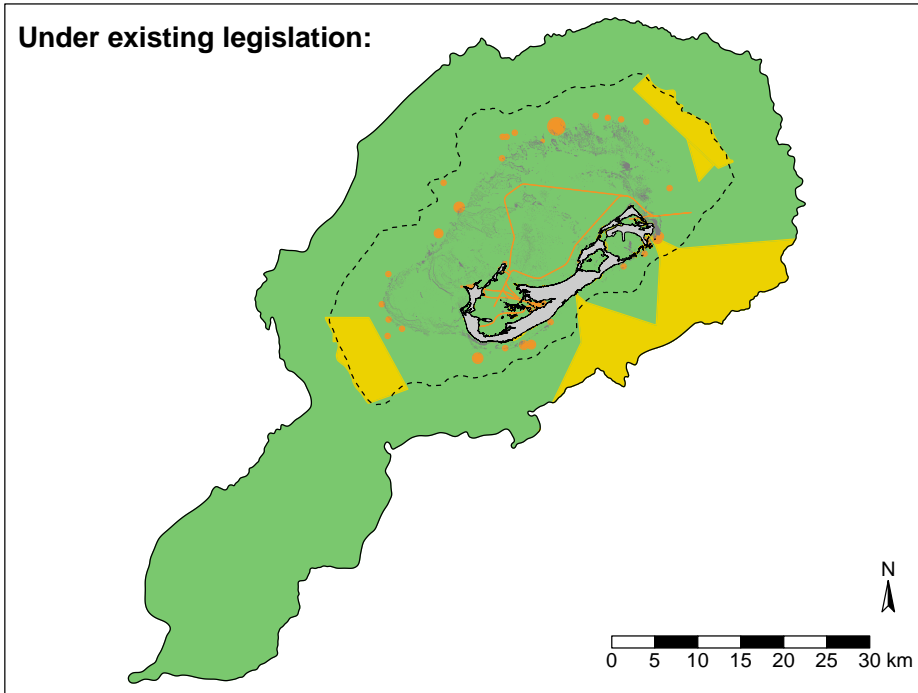
# Netting (all types)

Where can these activities take place?

- Permitted
- Restricted (permitted under certain conditions)
- Prohibited

- Land
- 55m (30 fathom) contour
- Reef
- 2000m (1094 fathom) contour

## Under existing legislation:



### How much area permits (or allows) these activities?

0-55m: 88.9% (841.1 sq km)  
 0-2000m: 88.4% (2281.9 sq km)

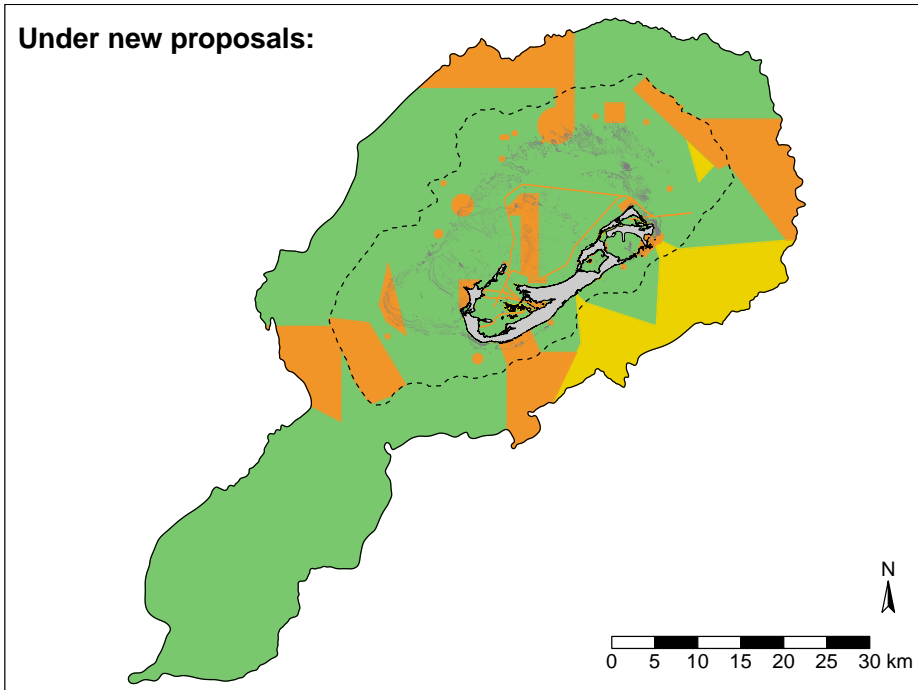
### How much area prohibits these activities?

0-55m: 1.7% (16.2 sq km)  
 0-2000m: 0.6% (16.2 sq km)

### How much area has restrictions on these activities (i.e., can take place under certain conditions)?

0-55m: 9.4% (89.2 sq km)  
 0-2000m: 10.9% (282.2 sq km)

## Under new proposals:



### How much area permits (or allows) these activities?

0-55m: 81.2% (768.8 sq km)  
 0-2000m: 75.7% (1952.6 sq km)

### How much area prohibits these activities?

0-55m: 17.6% (166.7 sq km)  
 0-2000m: 16.7% (430.1 sq km)

### How much area has restrictions on these activities (i.e., can take place under certain conditions)?

0-55m: 1.2% (11.0 sq km)  
 0-2000m: 7.7% (197.6 sq km)

## Non extractive recreation

Where can these activities take place?

- Permitted
- Restricted (permitted under certain conditions)
- Prohibited

- Land
- Reef
- 55m (30 fathom) contour
- 2000m (1094 fathom) contour

### Under existing legislation:



#### How much area permits (or allows) these activities?

0-55m: 100.0% (946.5 sq km)  
0-2000m: 100.0% (2580.3 sq km)

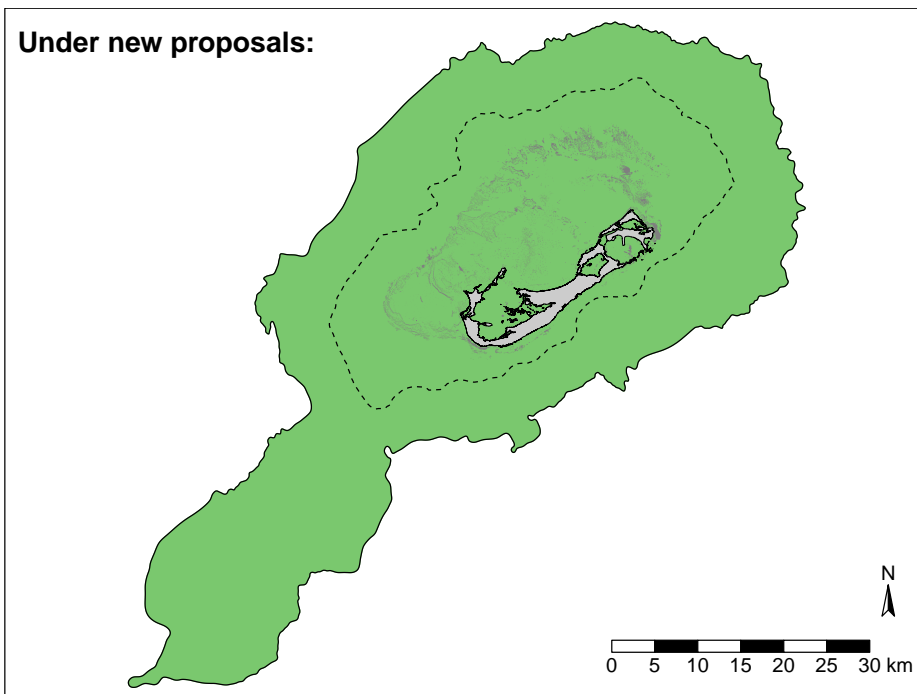
#### How much area prohibits these activities?

0-55m: 0% (0 sq km)  
0-2000m: 0% (0 sq km)

#### How much area has restrictions on these activities (i.e., can take place under certain conditions)?

0-55m: 0% (0 sq km)  
0-2000m: 0% (0 sq km)

### Under new proposals:



#### How much area permits (or allows) these activities?

0-55m: 100.0% (946.5 sq km)  
0-2000m: 100.0% (2580.3 sq km)

#### How much area prohibits these activities?

0-55m: 0% (0 sq km)  
0-2000m: 0% (0 sq km)

#### How much area has restrictions on these activities (i.e., can take place under certain conditions)?

0-55m: 0% (0 sq km)  
0-2000m: 0% (0 sq km)



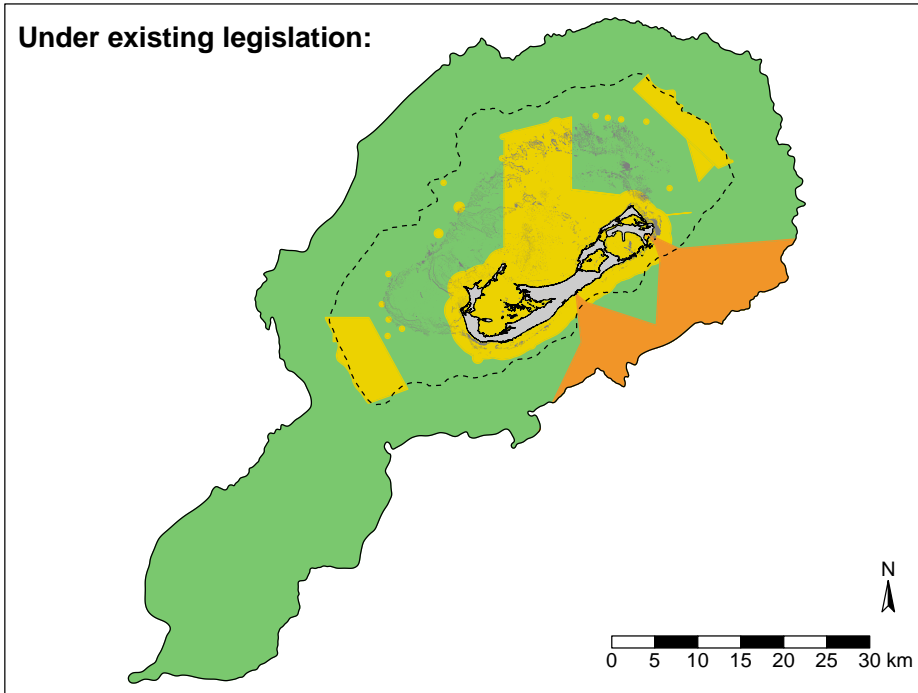
# Renewable energy generation

Where can these activities take place?

- Permitted
- Restricted (permitted under certain conditions)
- Prohibited

- Land
- 55m (30 fathom) contour
- Reef
- 2000m (1094 fathom) contour

## Under existing legislation:



### How much area permits (or allows) these activities?

0-55m: 55.8% (527.7 sq km)  
 0-2000m: 76.2% (1966.5 sq km)

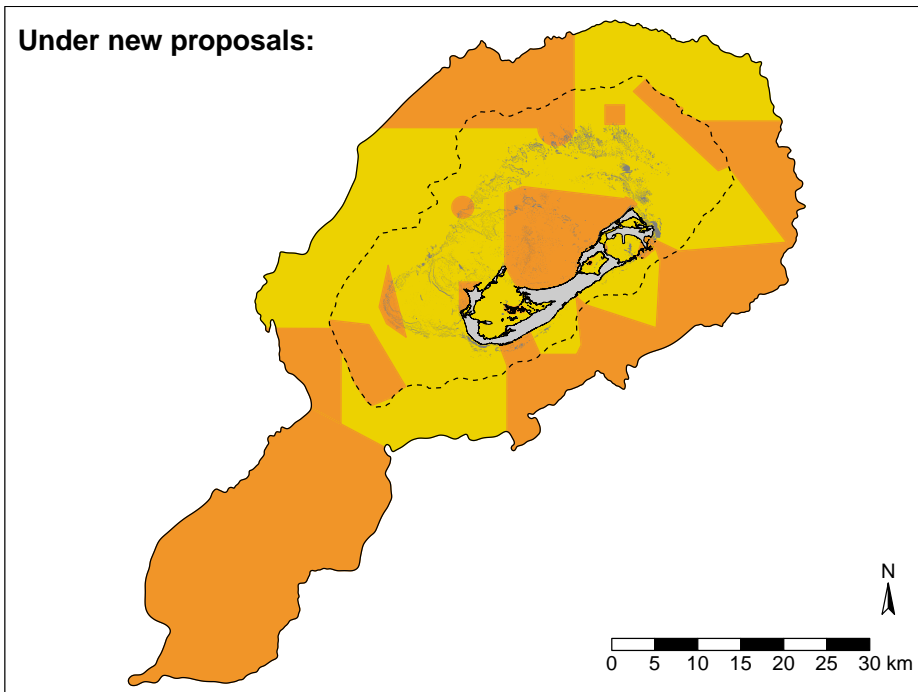
### How much area prohibits these activities?

0-55m: 0.5% (4.4 sq km)  
 0-2000m: 7.4% (191.1 sq km)

### How much area has restrictions on these activities (i.e., can take place under certain conditions)?

0-55m: 43.8% (414.3 sq km)  
 0-2000m: 16.4% (422.7 sq km)

## Under new proposals:



### How much area permits (or allows) these activities?

0-55m: 0.0% (0.0 sq km)  
 0-2000m: 0.0% (0.0 sq km)

### How much area prohibits these activities?

0-55m: 29.3% (277.5 sq km)  
 0-2000m: 50.9% (1312.9 sq km)

### How much area has restrictions on these activities (i.e., can take place under certain conditions)?

0-55m: 70.7% (669.0 sq km)  
 0-2000m: 49.1% (1267.4 sq km)

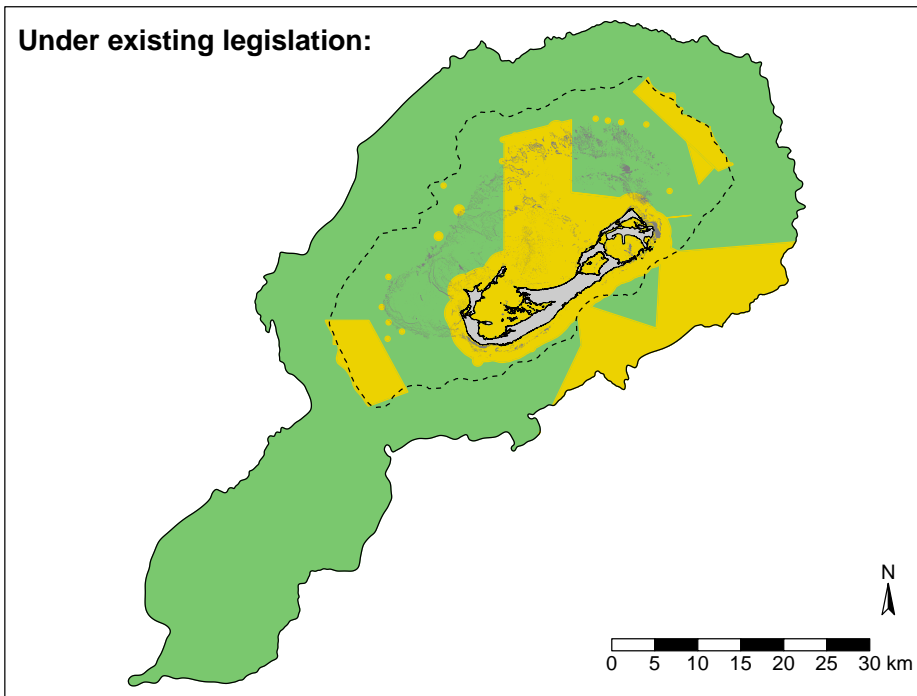
## Research: extractive

Where can these activities take place?

- Permitted
- Restricted (permitted under certain conditions)
- Prohibited

- Land
- Reef
- 55m (30 fathom) contour
- 2000m (1094 fathom) contour

### Under existing legislation:



#### How much area permits (or allows) these activities?

0-55m: 55.8% (527.7 sq km)  
 0-2000m: 76.2% (1966.5 sq km)

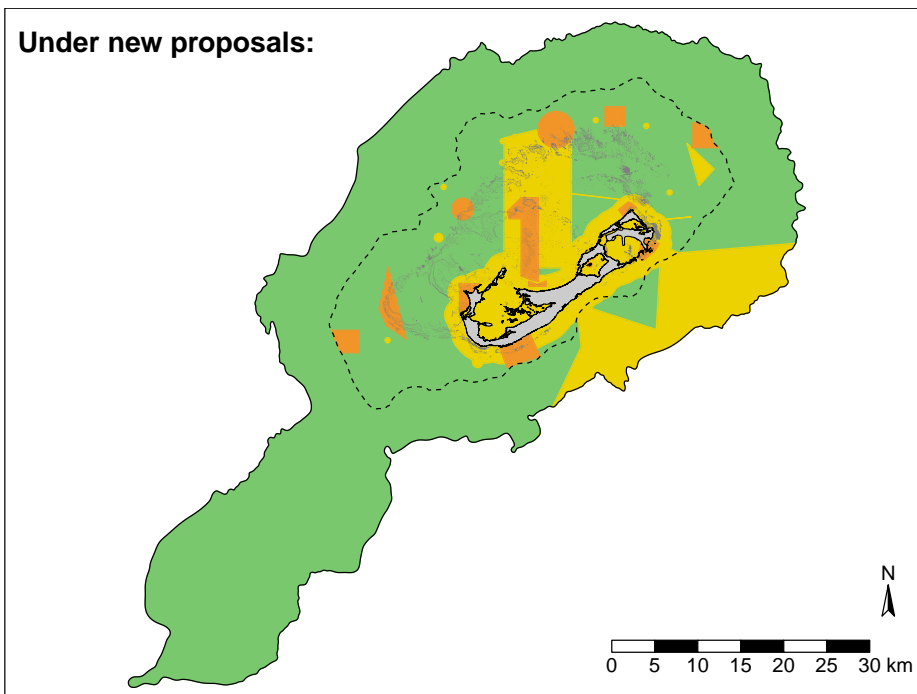
#### How much area prohibits these activities?

0-55m: 0.0% (0.0 sq km)  
 0-2000m: 0.0% (0.0 sq km)

#### How much area has restrictions on these activities (i.e., can take place under certain conditions)?

0-55m: 44.2% (418.7 sq km)  
 0-2000m: 23.8% (613.8 sq km)

### Under new proposals:



#### How much area permits (or allows) these activities?

0-55m: 61.8% (584.5 sq km)  
 0-2000m: 78.7% (2029.6 sq km)

#### How much area prohibits these activities?

0-55m: 9.6% (91.1 sq km)  
 0-2000m: 3.5% (91.1 sq km)

#### How much area has restrictions on these activities (i.e., can take place under certain conditions)?

0-55m: 28.6% (271.0 sq km)  
 0-2000m: 17.8% (459.6 sq km)

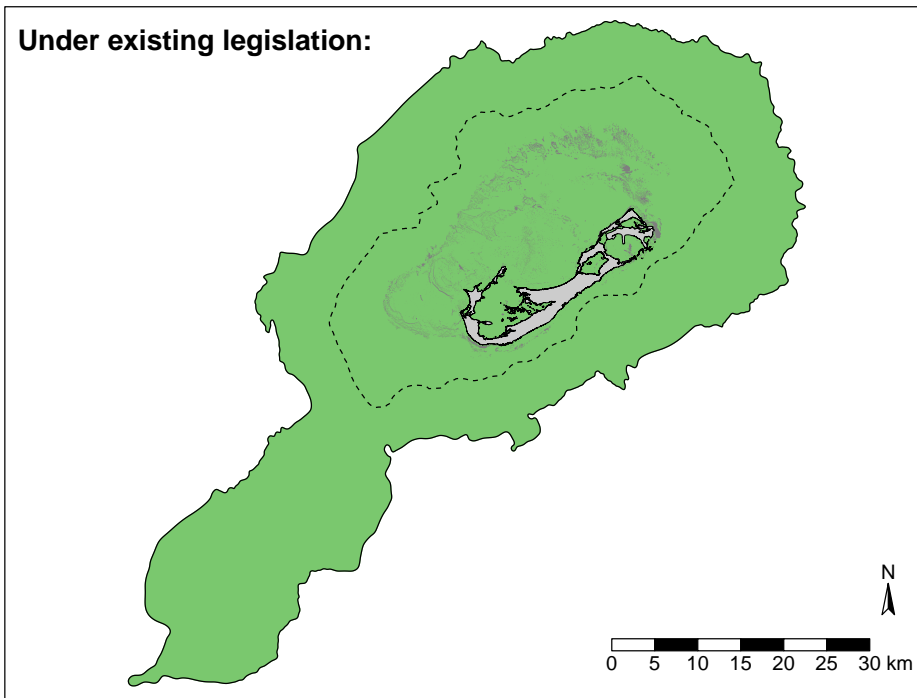
## Research: non-extractive

Where can these activities take place?

- Permitted
- Restricted (permitted under certain conditions)
- Prohibited

- Land
- Reef
- 55m (30 fathom) contour
- 2000m (1094 fathom) contour

### Under existing legislation:



#### How much area permits (or allows) these activities?

0-55m: 100.0% (946.5 sq km)  
 0-2000m: 100.0% (2580.3 sq km)

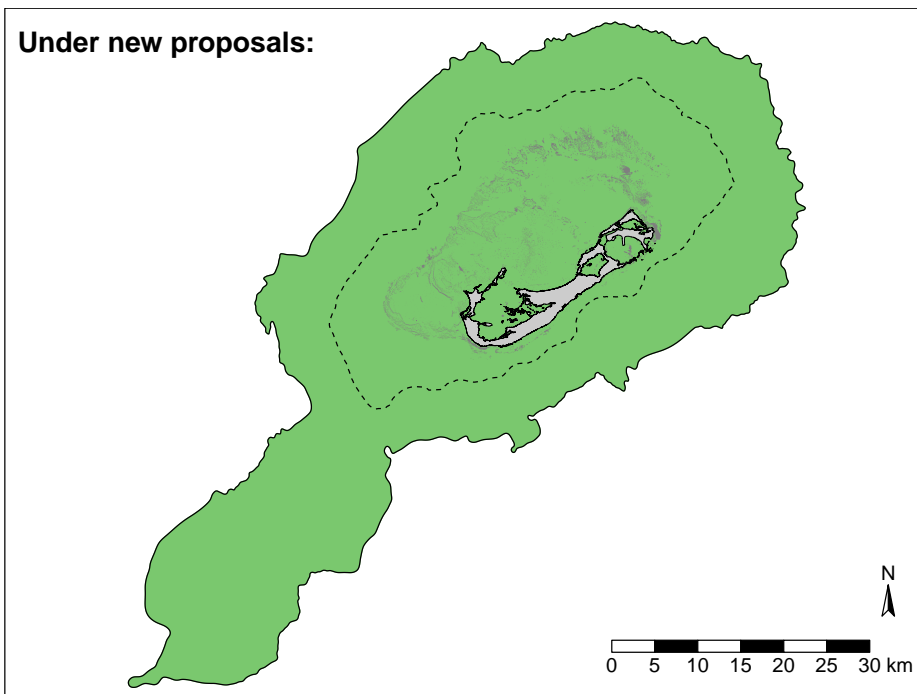
#### How much area prohibits these activities?

0-55m: 0% (0 sq km)  
 0-2000m: 0% (0 sq km)

#### How much area has restrictions on these activities (i.e., can take place under certain conditions)?

0-55m: 0% (0 sq km)  
 0-2000m: 0% (0 sq km)

### Under new proposals:



#### How much area permits (or allows) these activities?

0-55m: 100.0% (946.5 sq km)  
 0-2000m: 100.0% (2580.3 sq km)

#### How much area prohibits these activities?

0-55m: 0% (0 sq km)  
 0-2000m: 0% (0 sq km)

#### How much area has restrictions on these activities (i.e., can take place under certain conditions)?

0-55m: 0% (0 sq km)  
 0-2000m: 0% (0 sq km)

# Restoration/enhancement for conservation

Where can these activities take place?

- Permitted
- Restricted (permitted under certain conditions)
- Prohibited

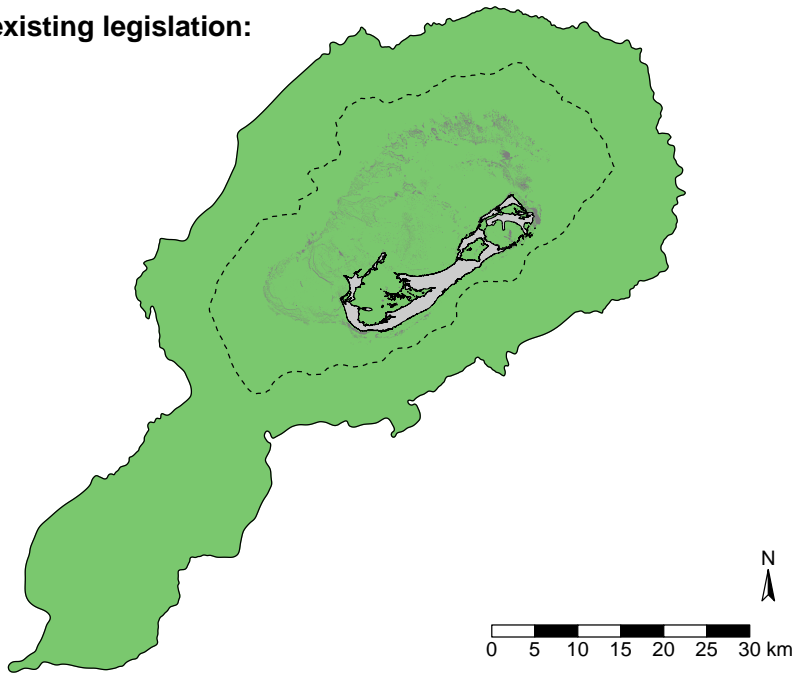
Land

Reef

--- 55m (30 fathom) contour

— 2000m (1094 fathom) contour

## Under existing legislation:



### How much area permits (or allows) these activities?

0-55m: 100.0% (946.5 sq km)  
 0-2000m: 100.0% (2580.3 sq km)

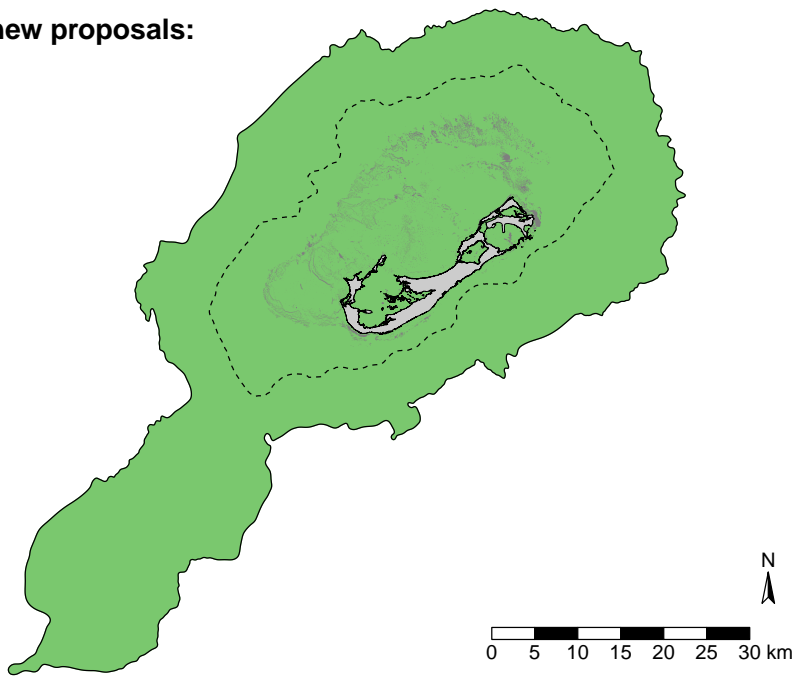
### How much area prohibits these activities?

0-55m: 0% (0 sq km)  
 0-2000m: 0% (0 sq km)

### How much area has restrictions on these activities (i.e., can take place under certain conditions)?

0-55m: 0% (0 sq km)  
 0-2000m: 0% (0 sq km)

## Under new proposals:



### How much area permits (or allows) these activities?

0-55m: 100.0% (946.5 sq km)  
 0-2000m: 100.0% (2580.3 sq km)

### How much area prohibits these activities?

0-55m: 0% (0 sq km)  
 0-2000m: 0% (0 sq km)

### How much area has restrictions on these activities (i.e., can take place under certain conditions)?

0-55m: 0% (0 sq km)  
 0-2000m: 0% (0 sq km)

## Restoration/enhancement for other reasons

Where can these activities take place?

- Permitted
- Restricted (permitted under certain conditions)
- Prohibited

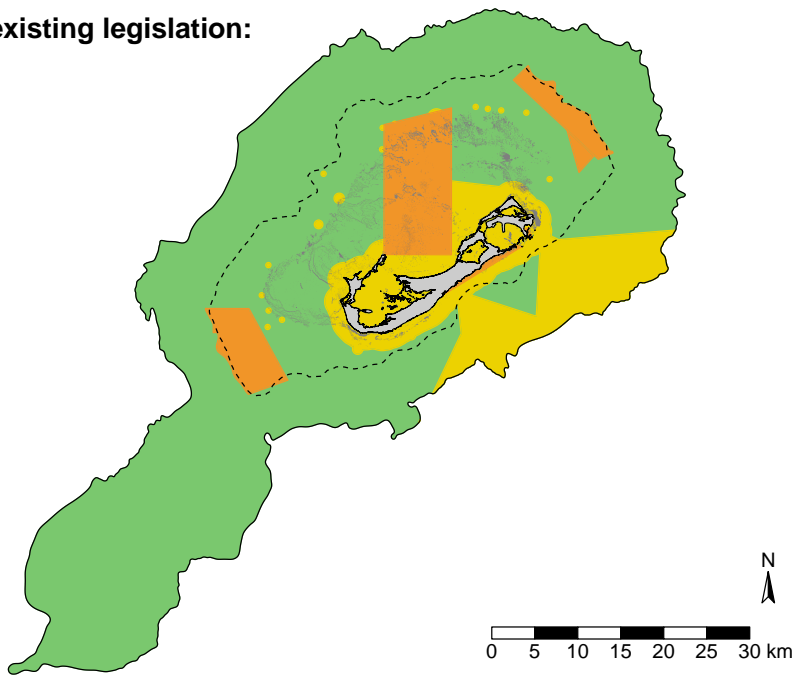
Land

Reef

--- 55m (30 fathom) contour

— 2000m (1094 fathom) contour

### Under existing legislation:



#### How much area permits (or allows) these activities?

0-55m: 55.8% (527.8 sq km)  
0-2000m: 76.2% (1966.6 sq km)

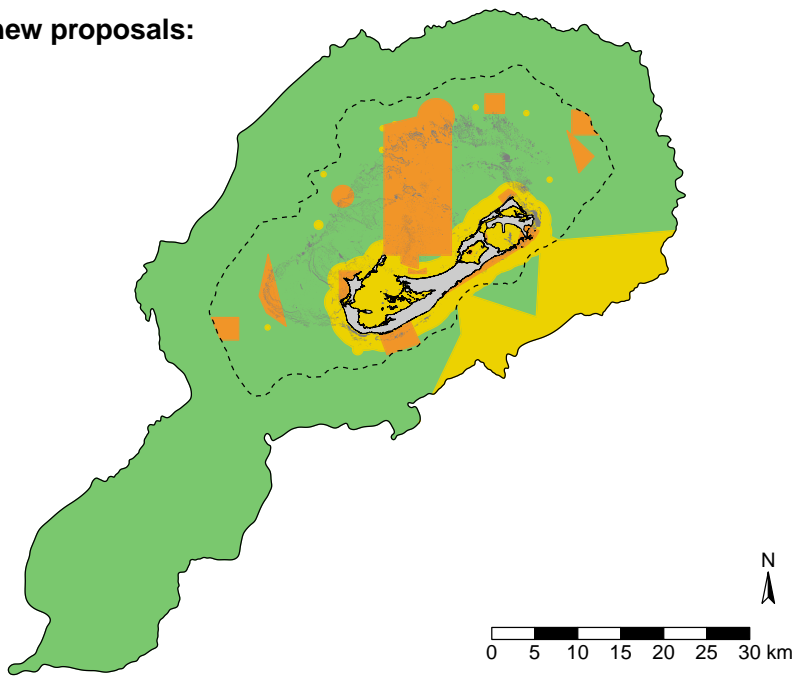
#### How much area prohibits these activities?

0-55m: 22.8% (215.4 sq km)  
0-2000m: 8.6% (221.8 sq km)

#### How much area has restrictions on these activities (i.e., can take place under certain conditions)?

0-55m: 21.5% (203.2 sq km)  
0-2000m: 15.2% (391.9 sq km)

### Under new proposals:



#### How much area permits (or allows) these activities?

0-55m: 61.8% (584.5 sq km)  
0-2000m: 78.7% (2029.7 sq km)

#### How much area prohibits these activities?

0-55m: 21.1% (200.1 sq km)  
0-2000m: 7.8% (200.1 sq km)

#### How much area has restrictions on these activities (i.e., can take place under certain conditions)?

0-55m: 17.1% (161.9 sq km)  
0-2000m: 13.6% (350.5 sq km)

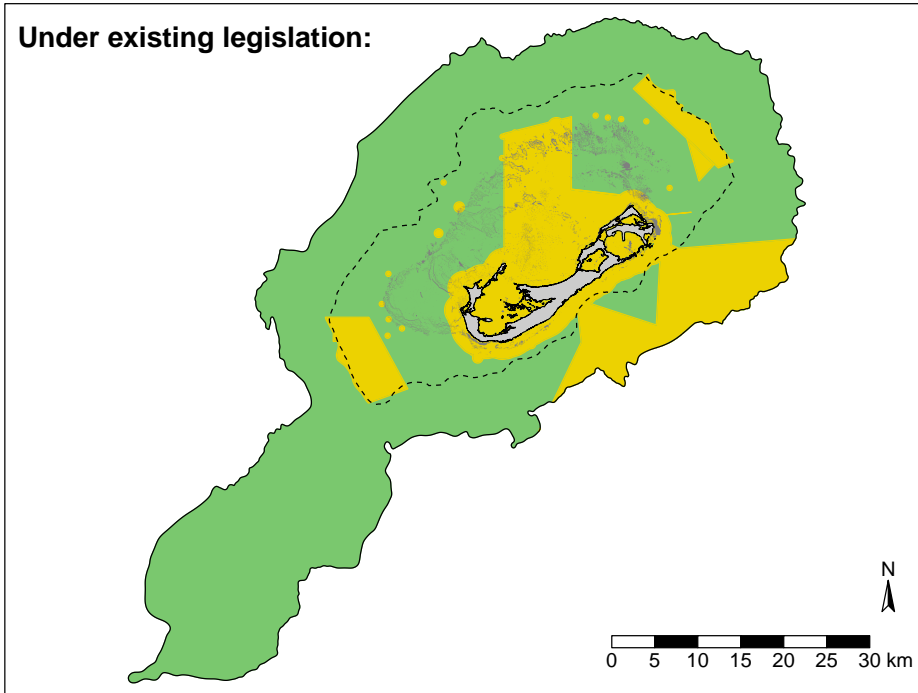
# Restorative aquaculture

Where can these activities take place?

- Permitted
- Restricted (permitted under certain conditions)
- Prohibited

- Land
- Reef
- 55m (30 fathom) contour
- 2000m (1094 fathom) contour

## Under existing legislation:



### How much area permits (or allows) these activities?

0-55m: 55.8% (527.7 sq km)  
 0-2000m: 76.2% (1966.5 sq km)

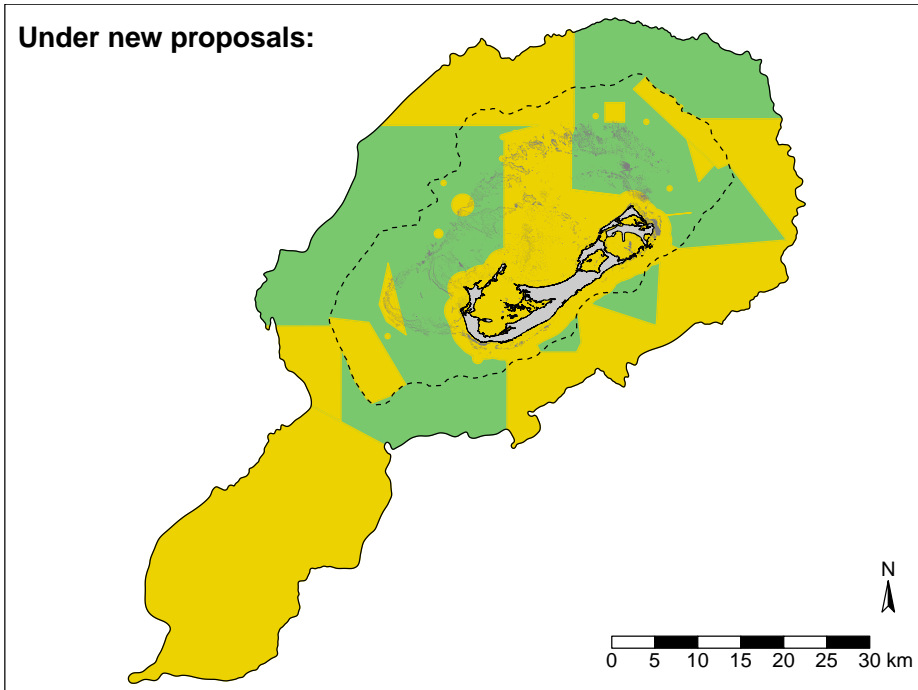
### How much area prohibits these activities?

0-55m: 0% (0 sq km)  
 0-2000m: 0% (0 sq km)

### How much area has restrictions on these activities (i.e., can take place under certain conditions)?

0-55m: 44.2% (418.7 sq km)  
 0-2000m: 23.8% (613.8 sq km)

## Under new proposals:



### How much area permits (or allows) these activities?

0-55m: 50.9% (482.1 sq km)  
 0-2000m: 41.8% (1078.6 sq km)

### How much area prohibits these activities?

0-55m: 0% (0 sq km)  
 0-2000m: 0% (0 sq km)

### How much area has restrictions on these activities (i.e., can take place under certain conditions)?

0-55m: 49.1% (464.4 sq km)  
 0-2000m: 58.2% (1501.7 sq km)

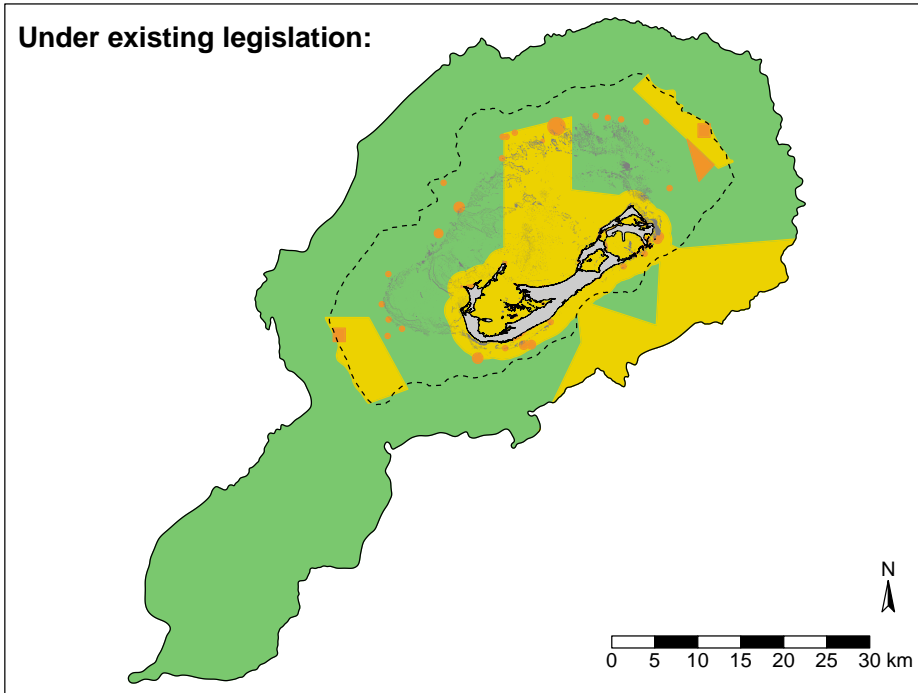
# Shipping

Where can these activities take place?

- Permitted
- Restricted (permitted under certain conditions)
- Prohibited

- Land
- 55m (30 fathom) contour
- Reef
- 2000m (1094 fathom) contour

## Under existing legislation:



### How much area permits (or allows) these activities?

0-55m: 55.8% (527.8 sq km)  
 0-2000m: 76.2% (1966.6 sq km)

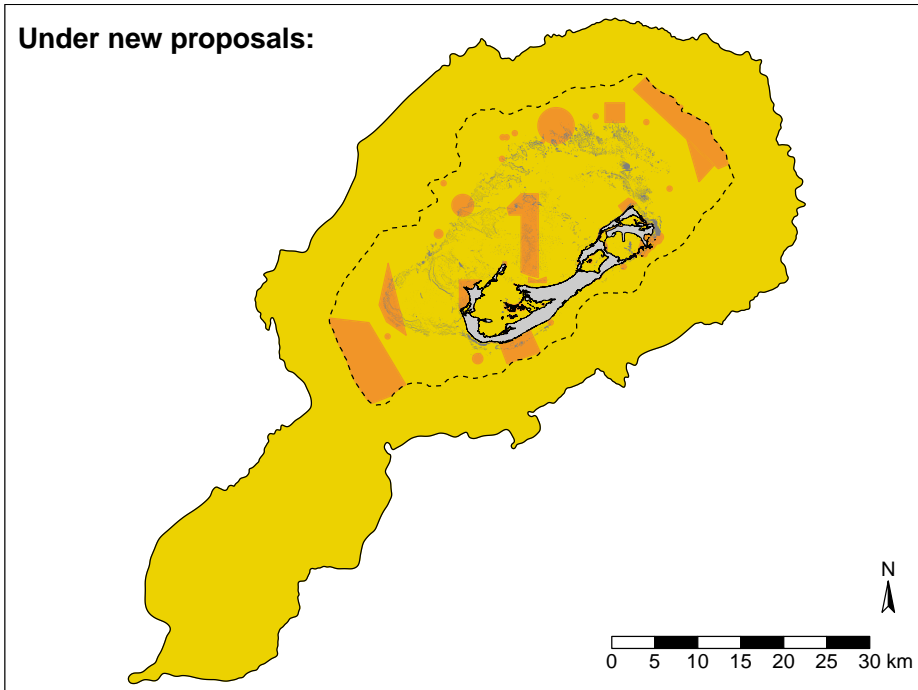
### How much area prohibits these activities?

0-55m: 2.8% (26.3 sq km)  
 0-2000m: 1.0% (26.7 sq km)

### How much area has restrictions on these activities (i.e., can take place under certain conditions)?

0-55m: 41.5% (392.4 sq km)  
 0-2000m: 22.7% (587.0 sq km)

## Under new proposals:



### How much area permits (or allows) these activities?

0-55m: 0.0% (0.0 sq km)  
 0-2000m: 0.0% (0.0 sq km)

### How much area prohibits these activities?

0-55m: 17.7% (167.6 sq km)  
 0-2000m: 6.5% (167.6 sq km)

### How much area has restrictions on these activities (i.e., can take place under certain conditions)?

0-55m: 82.3% (778.9 sq km)  
 0-2000m: 93.5% (2412.7 sq km)

# Shoreline fishing

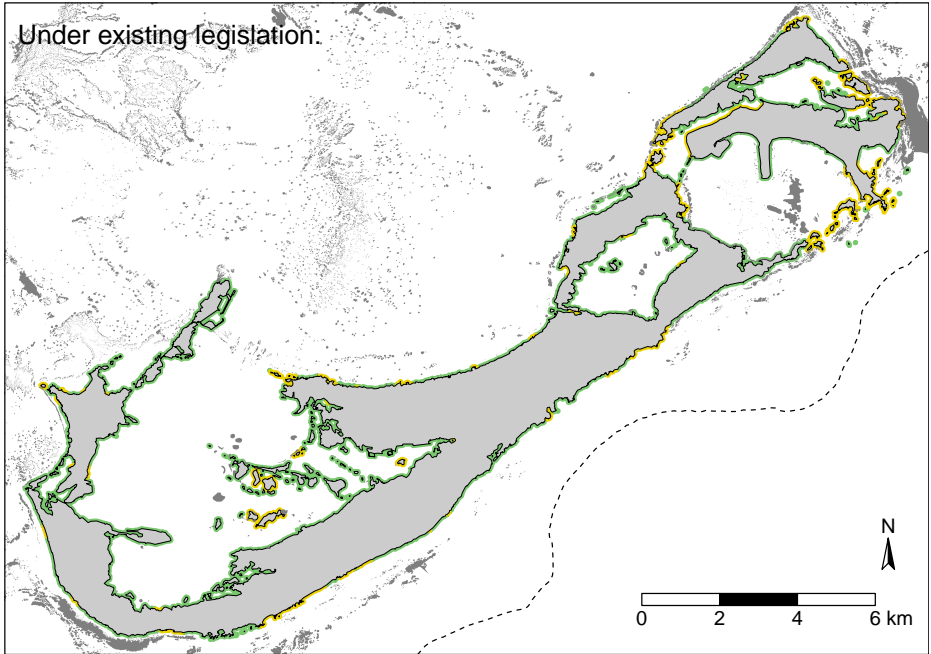
Showing only nearshore area.

Where can these activities take place?

- Permitted
- Restricted (permitted under certain conditions)
- Prohibited

- Land
- Reef

--- 55m (30 fathom) contour



**How much of the shoreline permits (or allows) these activities?**

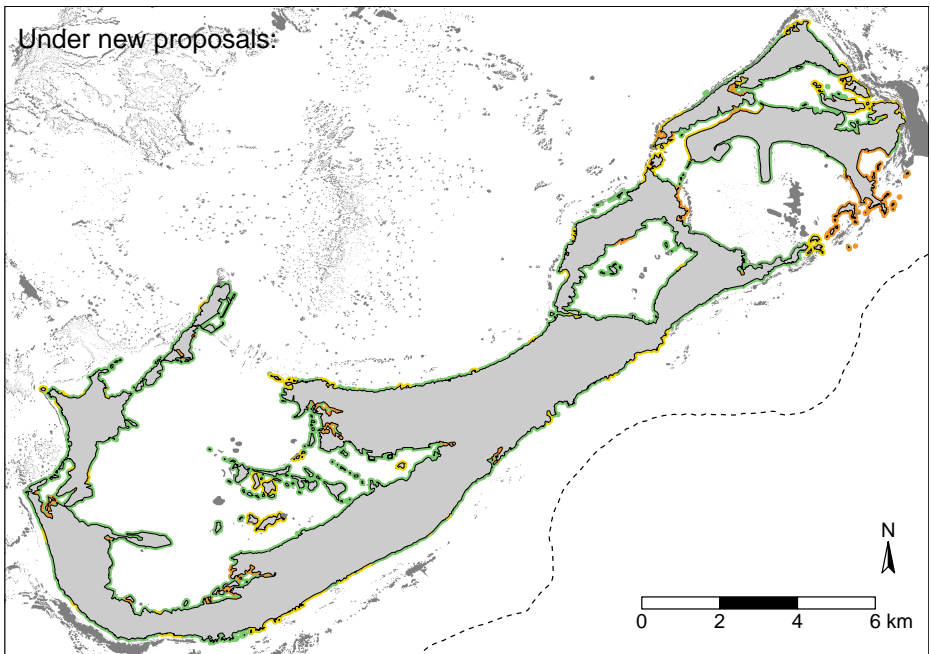
78.7% (268.3 km)

**How much of the shoreline prohibits these activities?**

0.0% (0.0 km)

**How much of the shoreline has restrictions on these activities (i.e., can take place under certain conditions)?**

21.4% (72.9 km)



**How much of the shoreline permits (or allows) these activities?**

75.2% (256.4 km)

**How much of the shoreline prohibits these activities?**

9.0% (30.6 km)

**How much of the shoreline has restrictions on these activities (i.e., can take place under certain conditions)?**

16.2% (55.1 km)



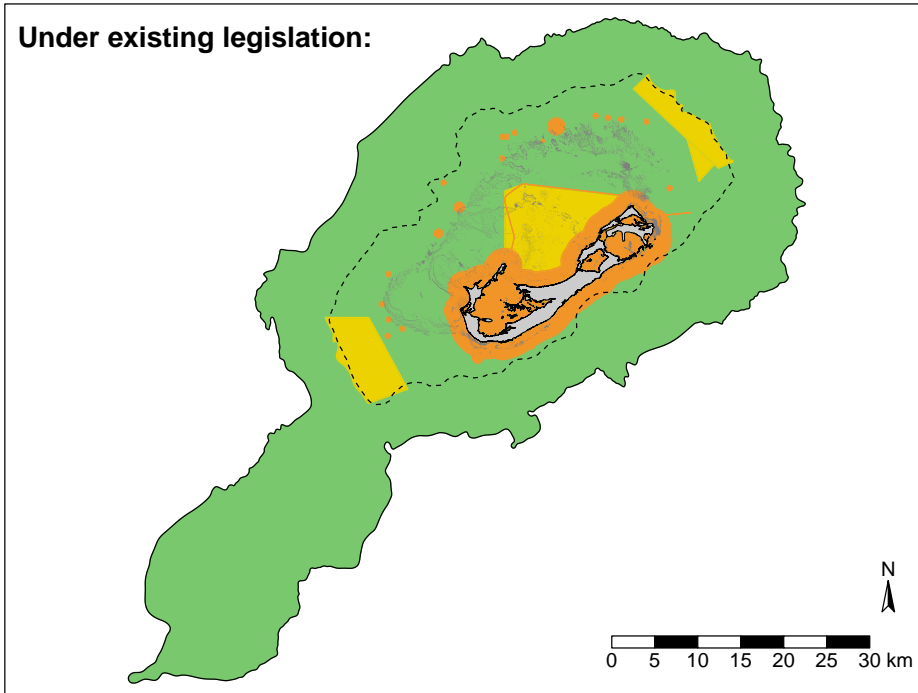
# Spearfishing

Where can these activities take place?

- Permitted
- Restricted (permitted under certain conditions)
- Prohibited

- Land
- 55m (30 fathom) contour
- Reef
- 2000m (1094 fathom) contour

## Under existing legislation:



### How much area permits (or allows) these activities?

0-55m: 61.5% (581.9 sq km)  
 0-2000m: 85.5% (2206.4 sq km)

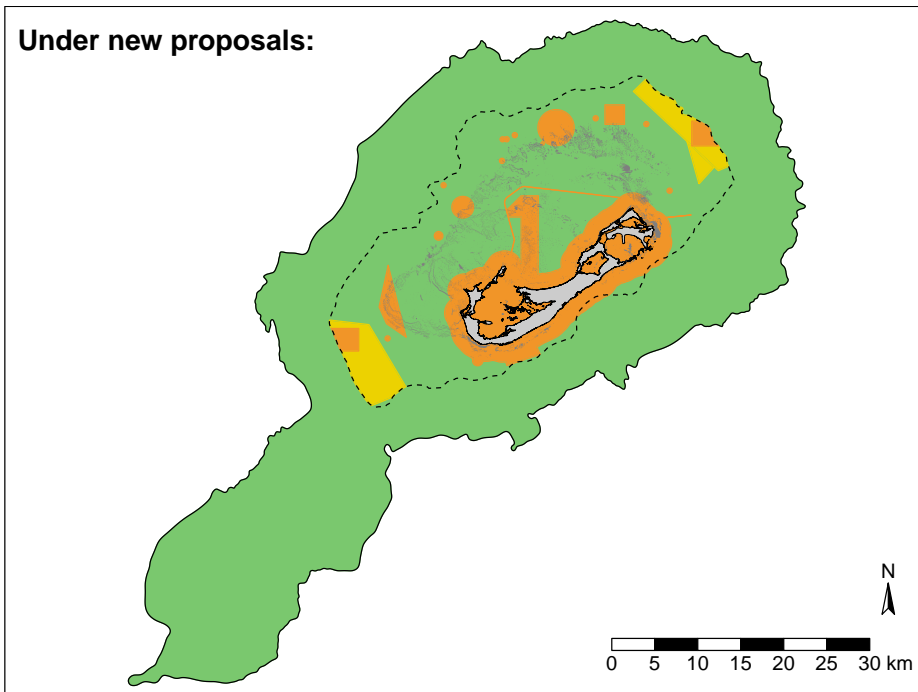
### How much area prohibits these activities?

0-55m: 20.9% (197.8 sq km)  
 0-2000m: 7.8% (200.7 sq km)

### How much area has restrictions on these activities (i.e., can take place under certain conditions)?

0-55m: 17.6% (166.8 sq km)  
 0-2000m: 6.7% (173.2 sq km)

## Under new proposals:



### How much area permits (or allows) these activities?

0-55m: 65.0% (615.0 sq km)  
 0-2000m: 87.0% (2245.8 sq km)

### How much area prohibits these activities?

0-55m: 27.8% (262.9 sq km)  
 0-2000m: 10.3% (265.9 sq km)

### How much area has restrictions on these activities (i.e., can take place under certain conditions)?

0-55m: 7.3% (68.6 sq km)  
 0-2000m: 2.7% (68.6 sq km)

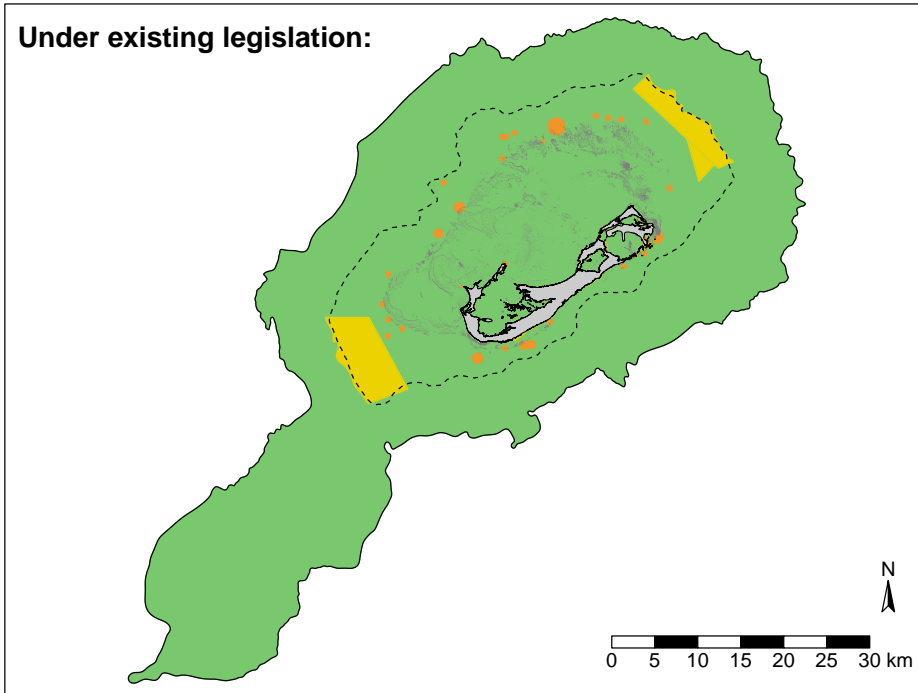
# Surface trolling

Where can these activities take place?

- Permitted
- Restricted (permitted under certain conditions)
- Prohibited

- Land
- 55m (30 fathom) contour
- Reef
- 2000m (1094 fathom) contour

## Under existing legislation:



### How much area permits (or allows) these activities?

0-55m: 89.4% (846.4 sq km)  
 0-2000m: 95.9% (2473.8 sq km)

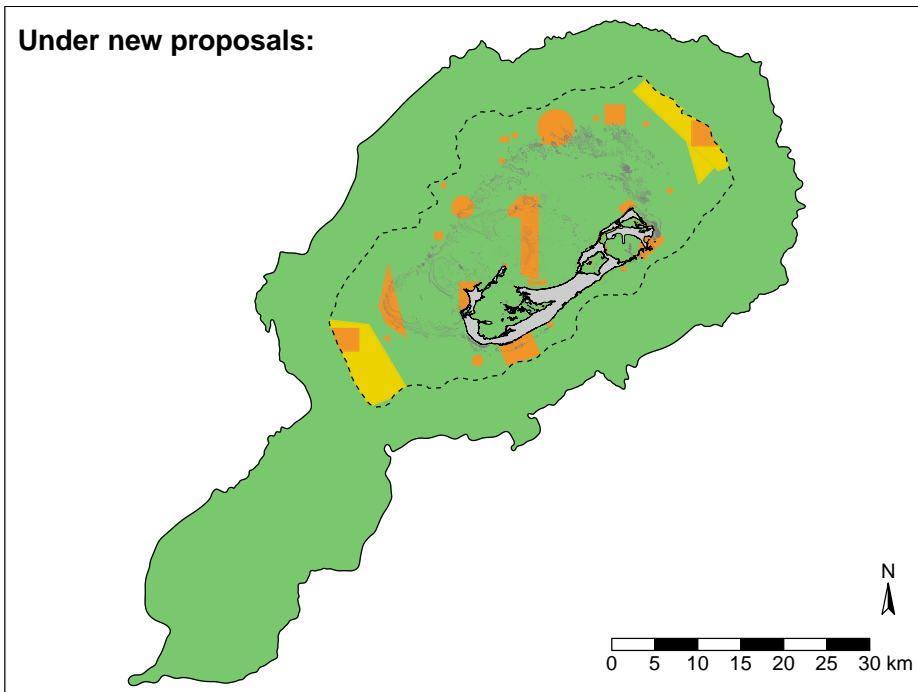
### How much area prohibits these activities?

0-55m: 1.6% (14.8 sq km)  
 0-2000m: 0.6% (14.8 sq km)

### How much area has restrictions on these activities (i.e., can take place under certain conditions)?

0-55m: 9.0% (85.3 sq km)  
 0-2000m: 3.6% (91.7 sq km)

## Under new proposals:



### How much area permits (or allows) these activities?

0-55m: 82.4% (780.1 sq km)  
 0-2000m: 93.6% (2413.9 sq km)

### How much area prohibits these activities?

0-55m: 10.3% (97.2 sq km)  
 0-2000m: 3.8% (97.2 sq km)

### How much area has restrictions on these activities (i.e., can take place under certain conditions)?

0-55m: 7.3% (69.2 sq km)  
 0-2000m: 2.7% (69.2 sq km)